

Anti-SARS-CoV-2 Spike antibody (600-700) (STJ11101794)

STJ11101794

GENERAL INFORMATION

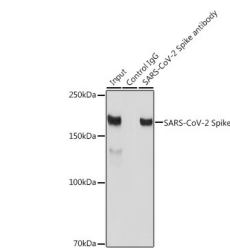
Product Type	Primary antibodies
Short Description	
Applications	WB/DB/IF/ICC/IP/ELISA
Host/Source	Rabbit
Reactivity	SARS-CoV-2

PRODUCT PROPERTIES

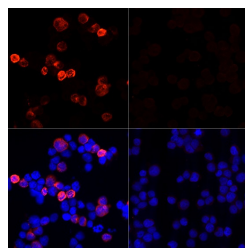
Clonality	Polyclonal
Clone ID	
Concentration	Lot specific
Conjugation	Unconjugated
Purification	Affinity purification
Dilution Range	WB:1:500-1:1000 DB:1:500-1:2000 IF/ICC:1:50-1:200 IP:0.5 Mu g-4 Mu g antibody for 200 Mu g-400 Mu g extracts of whole cells ELISA:Recommended starting concentration is 1 Mu g/mL. Please optimize the concentration based on your specific
Formulation	PBS with 0.05% Proclin300, 50% Glycerol, pH 7.3.
Isotype	IgG
Storage Instruction	Store at -20°C for up to 1 year from the date of receipt, and avoid repeat freeze-thaw cycles.

TARGET INFORMATION

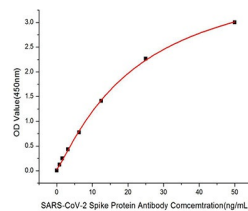
Gene ID	
Gene Symbol	
Uniprot ID	
Immunogen	
Immunogen Region	600-700
Specificity	A synthetic peptide corresponding to a sequence within amino acids 600-700 of coronavirus Spike (YP_009724390.1).
Immunogen Sequence	PGTNTSNQVAVLYQDVNCTE VPVAIHADQLTPTWRVYSTG SNVFQTRAGCLIGAHEVNNNS YECDIPIGAGICASYQTQTN SPRRARSVASQSIAYTMSL G



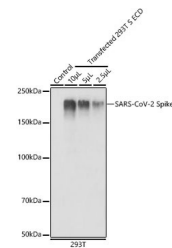
Immunoprecipitation analysis of 300 Mu g extracts of 293T cells using 3 Mu g SARS-CoV-2 Spike antibody (STJ11101794). Western blot was performed from the immunoprecipitate using SARS-CoV-2 Spike antibody (STJ11101794) at a dilution of 1:1000.



Immunofluorescence analysis of 293T cells transfected with SARS-CoV-2 Spike protein and untreated 293T cells use SARS-CoV-2 Spike Rabbit polyclonal antibody (STJ11101794) at dilution of 1:100 (40x lens). Secondary antibody: Cy3 Goat Anti-Rabbit IgG (H+L) at 1:500 dilution. Blue: DAPI for nuclear staining.



Immobilized Recombinant SARS-CoV-2 S1+S2 ECD (S-ECD) Protein (RP01283) at 1 Mu g/mL (100 Mu L/well) can bind SARS-CoV-2 Spike Rabbit polyclonal antibody (STJ11101794) with a linear range of 0.78-50ng/mL.



Western blot analysis of extracts of 293T and transfected 293T-S ECD (His-tag), using SARS-CoV-2 Spike Rabbit polyclonal antibody (STJ11101794) at 1:1000 dilution. Lysates/proteins: 25 Mu g per lane. Blocking buffer: 3% nonfat dry milk in TBST. Detection: ECL Basic Kit. Exposure time: 1s.

This product is suitable for in-vitro studies under the RESEARCH USE ONLY [RUO] licence. This product must not be used as for diagnostic or other medical purposes.
St John's Laboratory Ltd, Knowledge Dock Business Centre, University Way, London, E16 2RD | Tel: 0208 223 3081