

Anti-PLP1 antibody (90-150) (STJ11101785)
STJ11101785

GENERAL INFORMATION

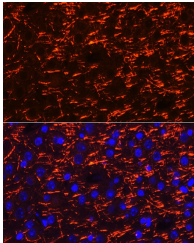
Product Type	Primary antibodies
Short Description	
Applications	WB/IHC-P/IF/ICC/ELISA
Host/Source	Rabbit
Reactivity	Human/Mouse/Rat

PRODUCT PROPERTIES

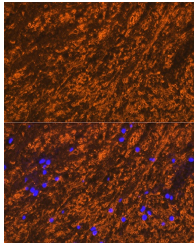
Clonality	Polyclonal
Clone ID	
Concentration	Lot specific
Conjugation	Unconjugated
Purification	Affinity purification
Dilution Range	WB:1:1000-1:5000 IHC-P:1:50-1:200 IF/ICC:1:50-1:200 ELISA:Recommended starting concentration is 1 Mu g/mL. Please optimize the concentration based on your specific assay requirements.
Formulation	PBS with 0.05% Proclin300, 50% Glycerol, pH 7.3.
Isotype	IgG
Storage Instruction	Store at -20°C for up to 1 year from the date of receipt, and avoid repeat freeze-thaw cycles.

TARGET INFORMATION

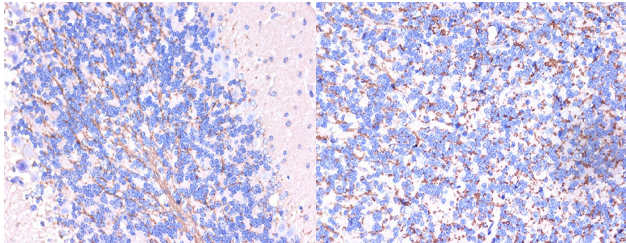
Gene ID	5354
Gene Symbol	PLP1
Uniprot ID	MYPR_HUMAN
Immunogen	
Immunogen Region	90-150
Specificity	Recombinant fusion protein containing a sequence corresponding to amino acids 90-150 of human PLP1 (NP_000524.3).
Immunogen Sequence	GFYTTGAVRQIFGDYKTTIC GKGLSATVTGGQKGRGSRGQ HQAHSLERVCHCLGKWLGH P D



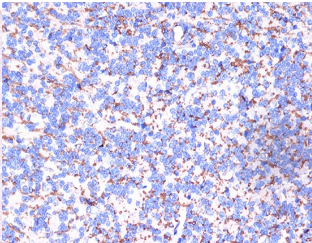
Immunofluorescence analysis of mouse brain cells using PLP1 Rabbit polyclonal antibody (STJ11101785) at dilution of 1:100 (40x lens). Blue: DAPI for nuclear staining.



Immunofluorescence analysis of rat brain cells using PLP1 Rabbit polyclonal antibody (STJ11101785) at dilution of 1:100 (40x lens). Blue: DAPI for nuclear staining.



Immunohistochemistry analysis of paraffin-embedded mouse brain using PLP1 Rabbit polyclonal antibody (STJ11101785) at dilution of 1:100 (40x lens). Perform microwave antigen retrieval with 10 mM PBS buffer pH 7.2 before commencing with immunohistochemistry staining protocol.



Immunohistochemistry analysis of paraffin-embedded rat brain using PLP1 Rabbit polyclonal antibody (STJ11101785) at dilution of 1:100 (40x lens). Perform microwave antigen retrieval with 10 mM PBS buffer pH 7.2 before commencing with immunohistochemistry staining protocol.