

Anti-N6-Methyl-m6A antibody [S4MR] (STJ11101784)
STJ11101784

GENERAL INFORMATION

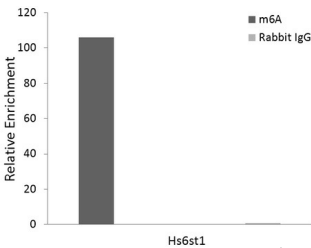
Product Type	Primary antibodies
Short Description	
Applications	DB/IF/ICC/ELISA/meRIP
Host/Source	Rabbit
Reactivity	Species independent

PRODUCT PROPERTIES

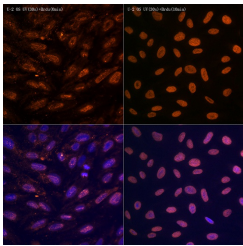
Clonality	Monoclonal
Clone ID	S4MR
Concentration	Lot specific
Conjugation	Unconjugated
Purification	Protein A
Dilution Range	DB:1:500-1:2000 IF/ICC:1:50-1:200 ELISA:Recommended starting concentration is 1 μ g/mL. Please optimize the concentration based on your specific assay requirements. meRIP:1:50-1:200
Formulation	PBS with 0.05% Proclin300, 0.05% BSA, 50% Glycerol, pH 7.3.
Isotype	IgG
Storage Instruction	Store at -20°C for up to 1 year from the date of receipt, and avoid repeat freeze-thaw cycles.

TARGET INFORMATION

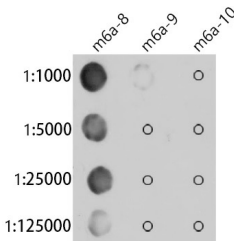
Gene ID	
Gene Symbol	
Uniprot ID	
Immunogen	
Immunogen Region	
Specificity	Chemical compounds corresponding to N6-methyladenosine/m6A.
Immunogen Sequence	



RNA Immunoprecipitation was performed on 100 μ g mouse liver total RNA, using 5 μ g of the N6-methyladenosine/ m6A Rabbit mAb. An equal amount of IgG was used as negative control. The immunoprecipitated RNA was verified by using Hs6st1 as PCR primer of qRT-PCR. The picture shows the relative enrichment multiple of Hs6st1 site.



Immunofluorescence analysis of U-2 OS treated with UV (30s) +BrdU (0min) and U-2 OS treated with UV (30s) +BrdU (10min) cells using N6-methyladenosine/ m6A Rabbit monoclonal antibody (STJ11101784) at dilution of 1:100 (40x lens). Secondary antibody: Cy3 Goat Anti-Rabbit IgG (H+L) at 1:500 dilution. Blue: DAPI for nuclear staining.



The m6A rabbit monoclonal antibody (STJ11101784) are tested in Dot Blot against N6-methyladenosine (m6A) and unmodified adenosine. Oligomer 8-ATAACTGG-m6A-CCGAATGGOligomer 9-ATAACTGGACCGAATGGOligomer 10-AAAAAAAAAAAAAAAA-biotin.

This product is suitable for in-vitro studies under the RESEARCH USE ONLY [RUO] licence. This product must not be used as for diagnostic or other medical purposes.
St John's Laboratory Ltd, Knowledge Dock Business Centre, University Way, London, E16 2RD | Tel: 0208 223 3081