

Anti-SQSTM1 antibody (341-440) [S3MR] (STJ11101773)

STJ11101773

GENERAL INFORMATION

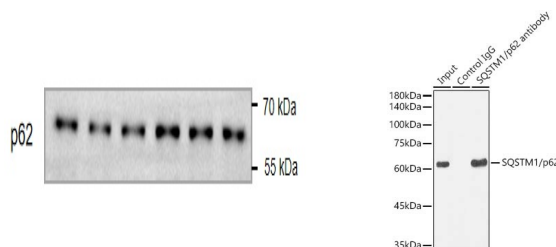
Product Type	Primary antibodies
Short Description	
Applications	WB/IHC-P/IF/ICC/IP/ELISA
Host/Source	Rabbit
Reactivity	Human/Mouse/Rat

PRODUCT PROPERTIES

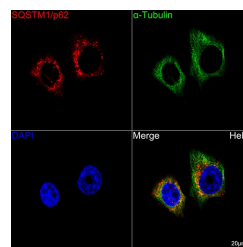
Clonality	Monoclonal
Clone ID	S3MR
Concentration	Lot specific
Conjugation	Unconjugated
Purification	Affinity purification
Dilution Range	WB:1:20000-1:80000 IHC-P:1:500-1:5000 IF/ICC:1:50-1:200 IP:0.5 Mu g-4 Mu g antibody for 200 Mu g-400 Mu g extracts of whole cells ELISA:Recommended starting concentration is 1 Mu g/mL. Please optimize the concentration based on your s
Formulation	PBS with 0.05% Proclin300, 0.05% BSA, 50% Glycerol, pH 7.3.
Isotype	IgG
Storage Instruction	Store at -20°C for up to 1 year from the date of receipt, and avoid repeat freeze-thaw cycles.

TARGET INFORMATION

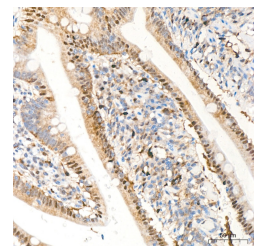
Gene ID	8878
Gene Symbol	SQSTM1
Uniprot ID	SQSTM_HUMAN
Immunogen	
Immunogen Region	341-440
Specificity	A synthetic peptide corresponding to a sequence within amino acids 341-440 of human SQSTM1/p62 (Q13501).
Immunogen Sequence	LSSKEVDPSTGELQSLQMPSESGPSSLDPSQEGPTGLKEA ALYPHLPPEADPRLESLSQ MLSMGFSDEGGWLTLLQTK NYDIGAALDTIQYSKHPPPL



Immunoprecipitation analysis of 300 Mu g extracts from HeLa cells using 3 Mu g SQSTM1/p62 Rabbit monoclonal antibody (STJ11101773). Western blot was performed from the immunoprecipitate using [KO Validated] SQSTM1/p62 Rabbit monoclonal antibody (STJ11101773) at a dilution of 1:1000.



Confocal imaging of HeLa cells using SQSTM1/p62 Rabbit monoclonal antibody (STJ11101773, dilution 1:200) (Red). The cells were counterstained with Alpha-tubulin (ubiquitous) chain Rabbit monoclonal antibody (dilution 1:100) (Green). DAPI was used for nuclear staining (Blue). Objective: 60x.



Immunohistochemistry analysis of SQSTM1/p62 in paraffin-embedded human small intestine tissue using SQSTM1/p62 Rabbit monoclonal antibody (STJ11101773) at a dilution of 1:1000 (40x lens). High pressure antigen retrieval was performed with 0.01 M citrate buffer (pH 6.0) prior to immunohistochemistry staining.

This product is suitable for in-vitro studies under the RESEARCH USE ONLY [RUO] licence. This product must not be used as for diagnostic or other medical purposes.
St John's Laboratory Ltd, Knowledge Dock Business Centre, University Way, London, E16 2RD | Tel: 0208 223 3081