

Anti-PGR antibody (260-330) [S2MR] (STJ11101772)

STJ11101772

GENERAL INFORMATION

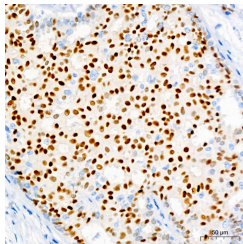
Product Type	Primary antibodies
Short Description	
Applications	WB/ELISA
Host/Source	Rabbit
Reactivity	Human

PRODUCT PROPERTIES

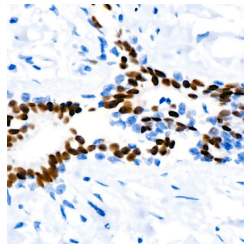
Clonality	Monoclonal
Clone ID	S2MR
Concentration	Lot specific
Conjugation	Unconjugated
Purification	Affinity purification
Dilution Range	WB:1:500-1:2000 ELISA:Recommended starting concentration is 1 µg/mL. Please optimize the concentration based on your specific assay requirements.
Formulation	PBS with 0.09% Sodium Azide, 0.05% BSA, 50% Glycerol, pH 7.3.
Isotype	IgG
Storage Instruction	Store at -20°C for up to 1 year from the date of receipt, and avoid repeat freeze-thaw cycles.

TARGET INFORMATION

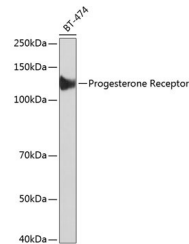
Gene ID	5241
Gene Symbol	PGR
Uniprot ID	PRGR_HUMAN
Immunogen	
Immunogen Region	260-330
Specificity	Recombinant fusion protein containing a sequence corresponding to amino acids 260-330 of human Progesterone Receptor (NP_000917.3).
Immunogen Sequence	AAAGGVALVPKEDSRFSAPR VALVEQDAPMAPGRSPLATT VMDFIHVPLPLNHALLAAR TRQLEDESVD



Immunohistochemistry analysis of paraffin-embedded human breast cancer using Progesterone Receptor Rabbit monoclonal antibody (STJ11101772) at dilution of 1:100 (40x lens). Perform high pressure antigen retrieval with 10 mM citrate buffer pH 6.0 before commencing with immunohistochemistry staining protocol.



Immunohistochemistry analysis of paraffin-embedded human breast using Progesterone Receptor Rabbit monoclonal antibody (STJ11101772) at dilution of 1:100 (40x lens). Perform high pressure antigen retrieval with 10 mM citrate buffer pH 6.0 before commencing with immunohistochemistry staining protocol.



Western blot analysis of extracts of BT-474 cells, using Progesterone Receptor antibody (STJ11101772) at 1:1000 dilution. Secondary antibody: HRP-Goat Anti-Rabbit IgG (H+L) (STJ5000856) at 1:10000 dilution. Lysates/proteins: 25 µg per lane. Blocking buffer: 3% nonfat dry milk in TBST. Detection: ECL Basic Kit. Exposure time: 3min.

This product is suitable for in-vitro studies under the RESEARCH USE ONLY [RUO] licence. This product must not be used as for diagnostic or other medical purposes.
St John's Laboratory Ltd, Knowledge Dock Business Centre, University Way, London, E16 2RD | Tel: 0208 223 3081