

Anti-BCL2 antibody (1-211) [S9MR] (STJ11101769)

STJ11101769

GENERAL INFORMATION

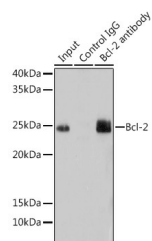
Product Type	Primary antibodies
Short Description	
Applications	WB/IHC-P/IP/ELISA
Host/Source	Rabbit
Reactivity	Human/Mouse/Rat

PRODUCT PROPERTIES

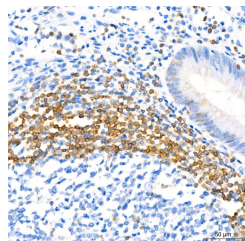
Clonality	Monoclonal
Clone ID	S9MR
Concentration	Lot specific
Conjugation	Unconjugated
Purification	Affinity purification
Dilution	WB:1:1000-1:2000
Range	IHC-P:1:200-1:800
	IP:0.5 Mu g-4 Mu g antibody for 400 Mu g-600 Mu g extracts of whole cells
	ELISA:Recommended starting concentration is 1 Mu g/mL. Please optimize the concentration based on your specific assay requirement
Formulation	PBS with 0.02% Sodium Azide, 0.05% BSA, 50% Glycerol, pH 7.3.
Isotype	IgG
Storage	Store at -20°C for up to 1 year from the date of receipt, and avoid repeat freeze-thaw cycles.
Instruction	

TARGET INFORMATION

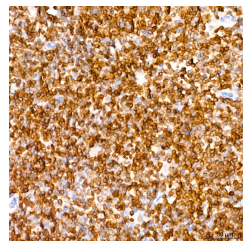
Gene ID	596
Gene Symbol	BCL2
Uniprot ID	BCL2_HUMAN
Immunogen	
Immunogen Region	1-211
Specificity	Recombinant fusion protein containing a sequence corresponding to amino acids 1-211 of human Bcl-2 (P10415).
Immunogen Sequence	MAHAGRTGYDNREIVMKYIH YKLSQRGYEWDAAGVGAAPP GAAPAGIFSSQPGHTPHPA ASRDPVARTSPLQTPAAPGA AAGPALSPPVPVHLLTQQA GDDFSRRYRRDFAEMSSQLH LTPFTARGRFATVVEELFRD GVNWGRIVAFFEFGGVMCVC SVNREMSPLVDNIALWMTEY LNRHLHTWIQDNGGWDFAVE LYGPSMRPLFD



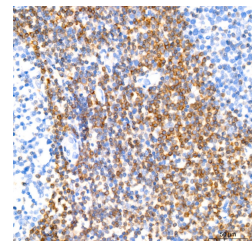
Immunoprecipitation analysis of 200 Mu g extracts of Mouse lung using 3 Mu g Bcl-2 antibody (STJ11101769). Western blot was performed from the immunoprecipitate using Bcl-2 antibody (STJ11101769) at a dilution of 1:1000.



Immunohistochemistry analysis of Bcl-2 in paraffin-embedded human appendix using Bcl-2 Rabbit monoclonal antibody (STJ11101769) at dilution of 1:100 (40x lens). Perform high pressure antigen retrieval with 10 mM citrate buffer pH 6.0 before commencing with immunohistochemistry staining protocol.



Immunohistochemistry analysis of Bcl-2 in paraffin-embedded human follicular lymphoma using Bcl-2 Rabbit monoclonal antibody (STJ11101769) at dilution of 1:100 (40x lens). Perform high pressure antigen retrieval with 10 mM citrate buffer pH 6.0 before commencing with immunohistochemistry staining protocol.



Immunohistochemistry analysis of Bcl-2 in paraffin-embedded human tonsil using Bcl-2 Rabbit monoclonal antibody (STJ11101769) at dilution of 1:100 (40x lens). Perform high pressure antigen retrieval with 10 mM citrate buffer pH 6.0 before commencing with immunohistochemistry staining protocol.

This product is suitable for in-vitro studies under the RESEARCH USE ONLY [RUO] licence. This product must not be used as for diagnostic or other medical purposes.
St John's Laboratory Ltd, Knowledge Dock Business Centre, University Way, London, E16 2RD | Tel: 0208 223 3081