

Anti-MLKL antibody (373-471) [S5MR] (STJ11101765)

STJ11101765

GENERAL INFORMATION

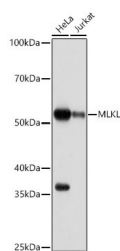
Product Type	Primary antibodies
Short Description	
Applications	WB/ELISA
Host/Source	Rabbit
Reactivity	Human

PRODUCT PROPERTIES

Clonality	Monoclonal
Clone ID	S5MR
Concentration	Lot specific
Conjugation	Unconjugated
Purification	Affinity purification
Dilution Range	WB:1:500-1:1000 ELISA:Recommended starting concentration is 1 Mu g/mL. Please optimize the concentration based on your specific assay requirements.
Formulation	PBS with 0.02% Sodium Azide, 0.05% BSA, 50% Glycerol, pH 7.3.
Isotype	IgG
Storage Instruction	Store at -20°C for up to 1 year from the date of receipt, and avoid repeat freeze-thaw cycles.

TARGET INFORMATION

Gene ID	197259
Gene Symbol	MLKL
Uniprot ID	MLKL_HUMAN
Immunogen	
Immunogen Region	373-471
Specificity	Recombinant fusion protein containing a sequence corresponding to amino acids 373-471 of human MLKL (Q8NB16).
Immunogen Sequence	STAYLSPQELEDVFYQYDVK SEIYSFGIVLWEIATGDIPF QGCNSEKIRKLVAVKRQQEP LGEDCPSELREIIDECAHDP PSVRPSVDEILKKLSTFSK



Western blot analysis of various lysates using MLKL Rabbit monoclonal antibody (STJ11101765) at 1:1000 dilution. Secondary antibody: HRP Goat Anti-Rabbit IgG (H+L) (STJS000856) at 1:10000 dilution. Lysates/proteins: 25 Mu g per lane. Blocking buffer: 3% nonfat dry milk in TBST. Detection: ECL Basic Kit. Exposure time: 30s.

This product is suitable for in-vitro studies under the RESEARCH USE ONLY [RUO] licence. This product must not be used as for diagnostic or other medical purposes.
St John's Laboratory Ltd, Knowledge Dock Business Centre, University Way, London, E16 2RD | Tel: 0208 223 3081