

Anti-DNMT1 antibody (1-100) [S1MR] (STJ11101761)

STJ11101761

GENERAL INFORMATION

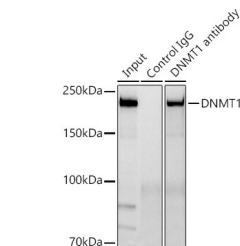
Product Type	Primary antibodies
Short Description	
Applications	WB/IP/ELISA
Host/Source	Rabbit
Reactivity	Human/Mouse/Rat

PRODUCT PROPERTIES

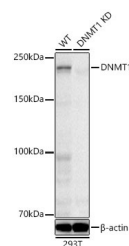
Clonality	Monoclonal
Clone ID	S1MR
Concentration	Lot specific
Conjugation	Unconjugated
Purification	Affinity purification
Dilution Range	WB:1:1000-1:4000 IP:0.5 Mu g-4 Mu g antibody for 200 Mu g-400 Mu g extracts of whole cells ELISA:Recommended starting concentration is 1 Mu g/mL. Please optimize the concentration based on your specific assay requirements.
Formulation	PBS with 0.05% Proclin300, 0.05% BSA, 50% Glycerol, pH 7.3.
Isotype	IgG
Storage Instruction	Store at -20°C for up to 1 year from the date of receipt, and avoid repeat freeze-thaw cycles.

TARGET INFORMATION

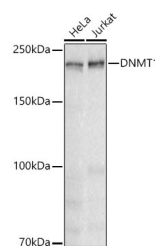
Gene ID	1786
Gene Symbol	DNMT1
Uniprot ID	DNMT1_HUMAN
Immunogen	
Immunogen Region	1-100
Specificity	A synthetic peptide corresponding to a sequence within amino acids 1-100 of human DNMT1 (NP_001370.1).
Immunogen Sequence	MPARTAPARVPTLAVPAISL PDDVRRRLKDLERDSLTEKE CVKEKLNLLHEFLQTEIKNQ LCDLETKLKKEELSEEGYLA KVKSLNKDLSLENGAHAYN



Immunoprecipitation analysis of 300 Mu g extracts from Jurkat cells using 3 Mu g [KD Validated] DNMT1 Rabbit monoclonal antibody (STJ11101761). Western blot was performed from the immunoprecipitate using DNMT1 (STJ11101761) at a dilution of 1:1000.



Western blot analysis of lysates from wild type (WT) and DNMT1 knockdown (KD) 293T cells, using [KD Validated] DNMT1 Rabbit monoclonal antibody (STJ11101761) at 1:1000 dilution. Secondary antibody: HRP-Goat Anti-Rabbit IgG (H+L) (STJ5000856) at 1:10000 dilution. Lysates/proteins: 25 Mu g per lane. Blocking buffer: 3% nonfat dry milk in TBST. Detection: ECL Basic Kit. Exposure time: 30s.



Western blot analysis of various lysates using [KD Validated] DNMT1 Rabbit monoclonal antibody (STJ11101761) at 1:1000 dilution incubated overnight at 4 A°C. Secondary antibody: HRP-conjugated Goat anti-Rabbit IgG (H+L) (STJ5000856) at 1:10000 dilution. Lysates/proteins: 25 Mu g per lane. Blocking buffer: 3% nonfat dry milk in TBST. Detection: ECL Basic Kit. Exposure time: 30 s.

This product is suitable for in-vitro studies under the RESEARCH USE ONLY [RUO] licence. This product must not be used as for diagnostic or other medical purposes.
St John's Laboratory Ltd, Knowledge Dock Business Centre, University Way, London, E16 2RD | Tel: 0208 223 3081