

Anti-CASP3 antibody (176-277) [S3MR] (STJ11101753)

STJ11101753

GENERAL INFORMATION

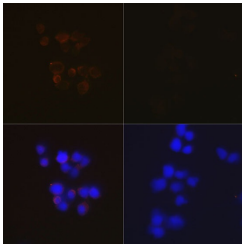
Product Type	Primary antibodies
Short Description	
Applications	WB/IHC-P/IF/ICC
Host/Source	Rabbit
Reactivity	Human/Mouse/Rat

PRODUCT PROPERTIES

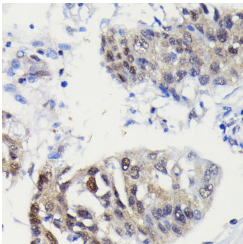
Clonality	Monoclonal
Clone ID	S3MR
Concentration	Lot specific
Conjugation	Unconjugated
Purification	Affinity purification
Dilution Range	WB:1:500-1:2000 IHC-P:1:100-1:500 IF/ICC:1:50-1:200
Formulation	PBS with 0.02% Sodium Azide, 0.05% BSA, 50% Glycerol, pH 7.3.
Isotype	IgG
Storage	Store at -20°C for up to 1 year from the date of receipt, and avoid repeat freeze-thaw cycles.
Instruction	

TARGET INFORMATION

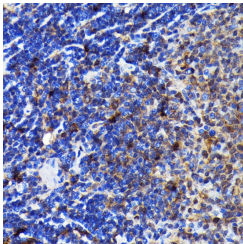
Gene ID	836
Gene Symbol	CASP3
Uniprot ID	CASP3_HUMAN
Immunogen	
Region	176-277
Specificity	Recombinant fusion protein containing a sequence corresponding to amino acids 176-277 of human Caspase-3 (NP_004337.2).
Immunogen	SGVDDDMACHKIPVEADFLY AYSTAPGYYSWRNSKDGSWF IQSLCAMLKQYADKLEFMHI LTRVNRKVATEFESFSFDAT
Sequence	FHAKKQIPCIVSMLTKELYF YH



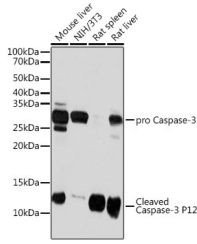
Immunofluorescence analysis of HeLa cells using Caspase-3 p12 antibody (STJ11101753). HeLa cells were treated by Etoposide (25 uM) at 37 °C for 5 hours. Blue: DAPI for nuclear staining.



Immunohistochemistry analysis of paraffin-embedded human lung cancer using Caspase-3 p12 antibody (STJ11101753) at dilution of 1:100 (40x lens). Perform microwave antigen retrieval with 10 mM PBS buffer pH 7. 2 before commencing with immunohistochemistry staining protocol.



Immunohistochemistry analysis of paraffin-embedded rat spleen using Caspase-3 p12 antibody (STJ11101753) at dilution of 1:100 (40x lens). Perform microwave antigen retrieval with 10 mM PBS buffer pH 7. 2 before commencing with immunohistochemistry staining protocol.



Western blot analysis of extracts of various cell lines, using Caspase-3 p12 antibody (STJ11101753) at 1:1000 dilution. Secondary antibody: HRP Goat Anti-Rabbit IgG (H+L) (STJSD000650) at 1:10000 dilution. Lysates/proteins: 25 µg per lane. Blocking buffer: 3% nonfat dry milk in TBST. Detection: ECL Basic Kit. Exposure time: 3min.

This product is suitable for in-vitro studies under the RESEARCH USE ONLY [RUO] licence. This product must not be used as for diagnostic or other medical purposes.
St John's Laboratory Ltd, Knowledge Dock Business Centre, University Way, London, E16 2RD | Tel: 0208 223 3081