

**Anti-RELA antibody (450-551) [S8MR] (STJ11101748)**  
STJ11101748

**GENERAL INFORMATION**

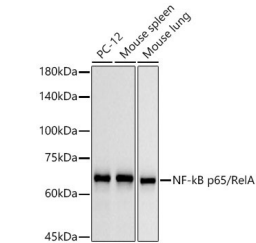
|                          |                            |
|--------------------------|----------------------------|
| <b>Product Type</b>      | Primary antibodies         |
| <b>Short Description</b> |                            |
| <b>Applications</b>      | WB/IHC-P/IF/ICC/ELISA/ChIP |
| <b>Host/Source</b>       | Rabbit                     |
| <b>Reactivity</b>        | Human/Mouse/Rat/Monkey     |

**PRODUCT PROPERTIES**

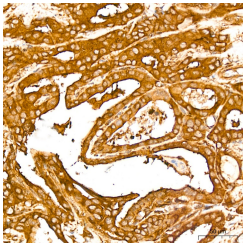
|                       |  |
|-----------------------|--|
| <b>Clonality</b>      | Monoclonal   |
| <b>Clone ID</b>       | S8MR   |
| <b>Concentration</b>  | Lot specific   |
| <b>Conjugation</b>    | Unconjugated   |
| <b>Purification</b>   | Affinity purification  |
| <b>Dilution Range</b> | WB:1:5000-1:20000<br>IHC-P:1:500-1:2000<br>IF/ICC:1:50-1:200<br>ELISA:Recommended starting concentration is 1 Mu g/mL. Please optimize the concentration based on your specific assay requirements.<br>ChIP:5 Mu g antibody for 10 Mu g-15 Mu g of Chr |
| <b>Formulation</b>    | PBS with 0.05% Proclin300, 0.05% BSA, 50% Glycerol, pH 7.3.  |
| <b>Isotype</b>        | IgG  |
| <b>Storage</b>        | Store at -20°C for up to 1 year from the date of receipt, and avoid repeat freeze-thaw cycles.   |
| <b>Instruction</b>    |  |

**TARGET INFORMATION**

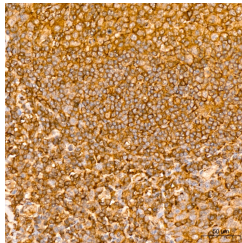
|                           |  |
|---------------------------|--|
| <b>Gene ID</b>            | 5970   |
| <b>Gene Symbol</b>        | RELA   |
| <b>Uniprot ID</b>         | TF65_HUMAN   |
| <b>Immunogen</b>          |  |
| <b>Immunogen Region</b>   | 450-551  |
| <b>Specificity</b>        | A synthetic peptide corresponding to a sequence within amino acids 450-551 of human NF-Kappa B p65 (Q04206). |
| <b>Immunogen Sequence</b> | LGALLGNSTDPVFTDLASV DNSEFQQLLNQGIPVAPHTT EPMLMEYPEAIRLVTGAQR PPDPAAPLGAAPLPNGLLS<br>GDEDFSSIADMDFSALLSQI SS  |



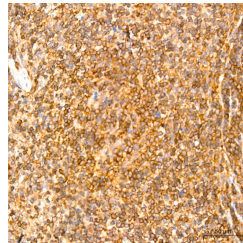
Western blot analysis of extracts of various lysates, using NF-kB p65/RelA rabbit monoclonal antibody (STJ11101748) at 1:1000 dilution. Secondary antibody: HRP Goat Anti-rabbit IgG (H+L) (STJ5000856) at 1:10000 dilution. Lysates/proteins: 25 Mu g per lane. Blocking buffer: 3% non-fat dry milk in TBST. Detection: ECL Basic Kit. Exposure time: 10s.



Immunohistochemistry analysis of NF-kB p65/RelA in paraffin-embedded human thyroid cancer tissue using NF-kB p65/RelA rabbit monoclonal antibody (STJ11101748) at a dilution of 1:800 (40x lens). High pressure antigen retrieval was performed with 0.01 M citrate buffer (pH 6.0) prior to immunohistochemistry staining.



Immunohistochemistry analysis of NF-kB p65/RelA in paraffin-embedded human tonsil tissue using NF-kB p65/RelA rabbit monoclonal antibody (STJ11101748) at a dilution of 1:800 (40x lens). High pressure antigen retrieval was performed with 0.01 M citrate buffer (pH 6.0) prior to immunohistochemistry staining.



Immunohistochemistry analysis of NF-kB p65/RelA in paraffin-embedded mouse spleen tissue using NF-kB p65/RelA rabbit monoclonal antibody (STJ11101748) at a dilution of 1:800 (40x lens). High pressure antigen retrieval was performed with 0.01 M citrate buffer (pH 6.0) prior to immunohistochemistry staining.

This product is suitable for in-vitro studies under the RESEARCH USE ONLY [RUO] licence. This product must not be used as for diagnostic or other medical purposes.  
St John's Laboratory Ltd, Knowledge Dock Business Centre, University Way, London, E16 2RD | Tel: 0208 223 3081