

Anti-Mono-Methyl-Histone H3-R2 antibody [S3MR] (STJ11101743)
STJ11101743

GENERAL INFORMATION

Product Type	Primary antibodies
Short Description	
Applications	WB/DB/ELISA/CUT&Tag
Host/Source	Rabbit
Reactivity	Human/Mouse/Rat/Other

PRODUCT PROPERTIES

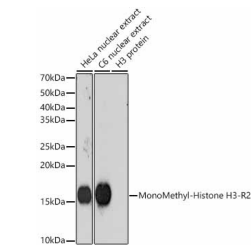
Clonality	Monoclonal
Clone ID	S3MR
Concentration	Lot specific
Conjugation	Unconjugated
Purification	Affinity purification
Dilution Range	WB:1:500-1:1000 DB:1:500-1:1000 ELISA:Recommended starting concentration is 1 Mu g/mL. Please optimize the concentration based on your specific assay requirements. CUT&Tag: 10 ⁵ cells/1 Mu g
Formulation	PBS with 0.02% Sodium Azide, 0.05% BSA, 50% Glycerol, pH 7.3.
Isotype	IgG
Storage Instruction	Store at -20°C for up to 1 year from the date of receipt, and avoid repeat freeze-thaw cycles.

TARGET INFORMATION

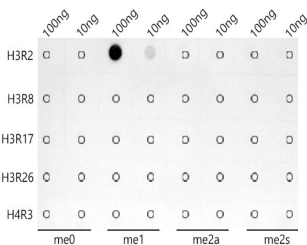
Gene ID	8290 8350/8351/8352/8353/8354/8355/8356/8357/8358/8968
Gene Symbol	H3-4 H3C1.H3C2.H3C3.H3C4.H3C6.
Uniprot ID	H31T_HUMAN H31_HUMAN
Immunogen	MARTKQTARKSTGGKAPRKQ LATKAARKSAPATGGVKKPH RYRPGTVALREIRRYQKSTE LLIRKLFPQRLVREIAQDFK TDLRFQSSAVMALQEACEAY
Immunogen Region	
Specificity	A synthetic monomethylated peptide around R2 of human Histone H3 (Q16695).
Immunogen Sequence	MARTKQTARKSTGGKAPRKQ LATKAARKSAPATGGVKKPH RYRPGTVALREIRRYQKSTE LLIRKLFPQRLVREIAQDFK TDLRFQSSAVMALQEACEAY



CUT&Tag was performed using the CUT&Tag Assay Kit (pAG-Tn5) for Illumina (PK20265) from 10⁶ K562 cells with 1 Mu g MonoMethyl-Histone H3-R2 antibody (STJ11101743), along with a Goat Anti-rabbit IgG (H+L). The CUT&Tag results indicate the enrichment pattern of H3R2me1 in representative gene loci (MYOD1), as shown in figure.



Western blot analysis of extracts of various cell lines, using MonoMethyl-Histone H3-R2 antibody (STJ11101743) at 1:1000 dilution. Secondary antibody: HRP Goat Anti-rabbit IgG (H+L) (STJS000856) at 1:10000 dilution. Lysates/proteins: 25 Mu g per lane. Blocking buffer: 3% non-fat dry milk in TBST. Detection: ECL Basic Kit. Exposure time: 180s.



Dot-blot analysis of all sorts of peptides using MonoMethyl-Histone H3-R2 antibody (STJ11101743) at 1:1000 dilution.

This product is suitable for in-vitro studies under the RESEARCH USE ONLY [RUO] licence. This product must not be used as for diagnostic or other medical purposes.
St John's Laboratory Ltd, Knowledge Dock Business Centre, University Way, London, E16 2RD | Tel: 0208 223 3081