

Anti-MAPK1 antibody (200-300) [S8MR] (STJ11101738)
STJ11101738

GENERAL INFORMATION

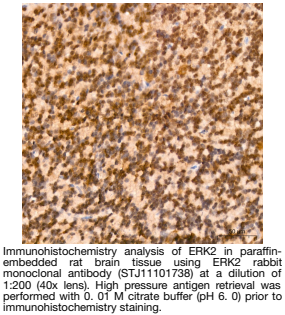
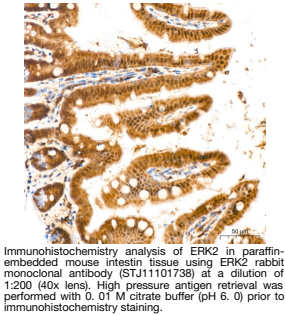
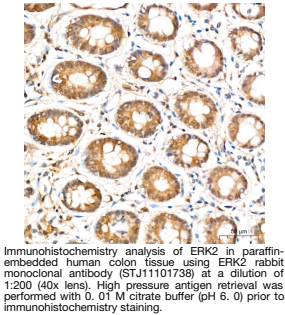
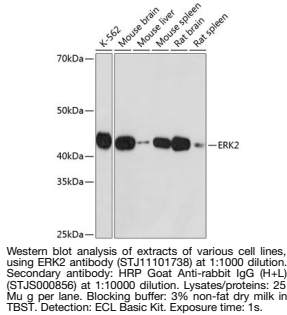
Product Type	Primary antibodies
Short Description	
Applications	WB/IHC-P/ELISA
Host/Source	Rabbit
Reactivity	Human/Mouse/Rat

PRODUCT PROPERTIES

Clonality	Monoclonal
Clone ID	S8MR
Concentration	Lot specific
Conjugation	Unconjugated
Purification	Affinity purification
Dilution	WB:1:500-1:1000
Range	IHC-P:1:50-1:200
	ELISA:Recommended starting concentration is 1 μ g/mL. Please optimize the concentration based on your specific assay requirements.
Formulation	PBS with 0.05% Proclin300, 0.05% BSA, 50% Glycerol, pH 7.3.
Isotype	IgG
Storage Instruction	Store at -20°C for up to 1 year from the date of receipt, and avoid repeat freeze-thaw cycles.

TARGET INFORMATION

Gene ID	5594
Gene Symbol	MAPK1
Uniprot ID	MK01_HUMAN
Immunogen	
Immunogen Region	200-300
Specificity	A synthetic peptide corresponding to a sequence within amino acids 200-300 of human ERK2/ERK1/2 (P27361/P28482).
Immunogen Sequence	FLTEYVATRWWYRAPEIMLNS KGYTKSIDIWSVGCILAEML SNRPIFGKHYLDQLNHILG ILGSPSQEDLNCIINMKARN YLQSLPSKTKVAVAKLFPKS D/LNSKGYTKSIDIWSVGCILAEMLSNRPIFGKHYLDQL NHILGILGSPSQEDLNCIIN LKARNYLLSLPHKNKVPWNR LFPNADSKALDLLDKMLTFN PHK



This product is suitable for in-vitro studies under the RESEARCH USE ONLY [RUO] licence. This product must not be used as for diagnostic or other medical purposes.
St John's Laboratory Ltd, Knowledge Dock Business Centre, University Way, London, E16 2RD | Tel: 0208 223 3081