

Anti-CUL3 antibody (669-768) [S4MR] (STJ11101734)
STJ11101734

GENERAL INFORMATION

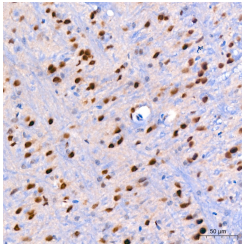
Product Type	Primary antibodies
Short Description	
Applications	WB/IHC-P/ELISA
Host/Source	Rabbit
Reactivity	Human/Mouse/Rat

PRODUCT PROPERTIES

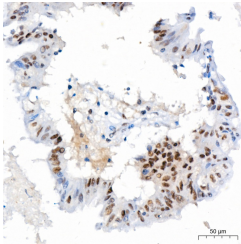
Clonality	Monoclonal
Clone ID	S4MR
Concentration	Lot specific
Conjugation	Unconjugated
Purification	Affinity purification
Dilution Range	WB:1:500-1:1000 IHC-P:1:50-1:200 ELISA:Recommended starting concentration is 1 Mu g/mL. Please optimize the concentration based on your specific assay requirements.
Formulation	PBS with 0.02% Sodium Azide, 0.05% BSA, 50% Glycerol, pH 7.3.
Isotype	IgG
Storage Instruction	Store at-20°C for up to 1 year from the date of receipt, and avoid repeat freeze-thaw cycles.

TARGET INFORMATION

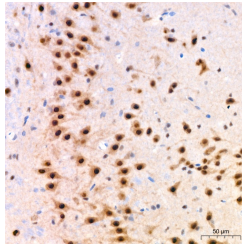
Gene ID	8452
Gene Symbol	CUL3
Uniprot ID	CUL3_HUMAN
Immunogen	
Immunogen Region	669-768
Specificity	A synthetic peptide corresponding to a sequence within amino acids 669-768 of human Cullin 3 (Q13618). LHRVKIQTVAAKQGSDPER KETRQKVDDDRKHEIEAIV RIMKSRKKMQHNVLVAEVTQ QLKARFLPSPVVIKKRIEGL
Immunogen Sequence	IEREYLARTPEDRKVITYVA



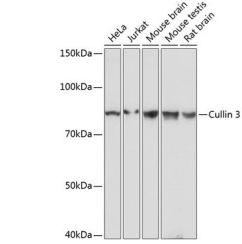
Immunohistochemistry analysis of Cullin 3 in paraffin-embedded mouse brain tissue using Cullin 3 Rabbit monoclonal antibody (STJ11101734) at a dilution of 1:200 (40x lens). High pressure antigen retrieval was performed with 0.01 M citrate buffer (pH 6.0) prior to immunohistochemistry staining.



Immunohistochemistry analysis of Cullin 3 in paraffin-embedded human colon carcinoma tissue using Cullin 3 Rabbit monoclonal antibody (STJ11101734) at a dilution of 1:200 (40x lens). High pressure antigen retrieval was performed with 0.01 M citrate buffer (pH 6.0) prior to immunohistochemistry staining.



Immunohistochemistry analysis of Cullin 3 in paraffin-embedded rat brain tissue using Cullin 3 Rabbit monoclonal antibody (STJ11101734) at a dilution of 1:200 (40x lens). High pressure antigen retrieval was performed with 0.01 M citrate buffer (pH 6.0) prior to immunohistochemistry staining.



Western blot analysis of various lysates using Cullin 3 Rabbit monoclonal antibody (STJ11101734) at 1:1000 dilution. Secondary antibody: HRP Goat Anti-Rabbit IgG (H+L) (STJ5000856) at 1:10000 dilution. Lysates/proteins: 25 Mu g per lane. Blocking buffer: 3% nonfat dry milk in TBST. Detection: ECL Basic Kit. Exposure time: 1s.