

Anti-AR antibody (1-100) [S0MR] (STJ11101730)
STJ11101730

GENERAL INFORMATION

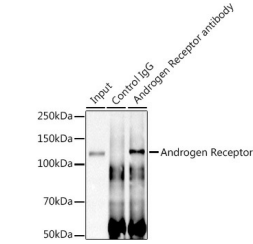
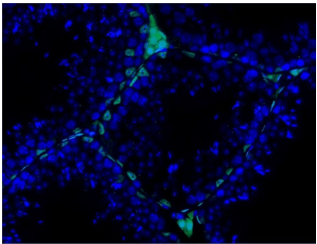
Product Type	Primary antibodies
Short Description	
Applications	WB/IHC-P/IF/ICC/IP/ELISA
Host/Source	Rabbit
Reactivity	Human/Mouse/Rat

PRODUCT PROPERTIES

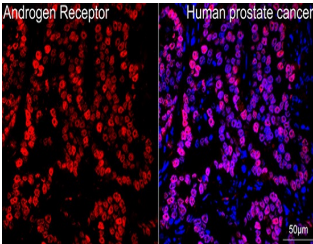
Clonality	Monoclonal
Clone ID	S0MR
Concentration	Lot specific
Conjugation	Unconjugated
Purification	Affinity purification
Dilution Range	WB:1:1000-1:2000 IHC-P:1:200-1:800 IF/ICC:1:200-1:800 IP:0.5 Mu g-4 Mu g antibody for 400 Mu g-600 Mu g extracts of whole cells ELISA:Recommended starting concentration is 1 Mu g/mL. Please optimize the concentration based on your spe
Formulation	PBS with 0.02% Sodium Azide, 0.05% BSA, 50% Glycerol, pH 7.3.
Isotype	IgG
Storage	Store at -20°C for up to 1 year from the date of receipt, and avoid repeat freeze-thaw cycles.
Instruction	

TARGET INFORMATION

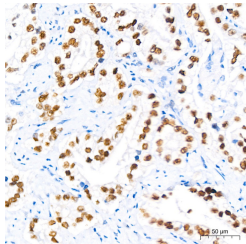
Gene ID	367
Gene Symbol	AR
Uniprot ID	ANDR_HUMAN
Immunogen	
Immunogen	1-100
Region	
Specificity	A synthetic peptide corresponding to a sequence within amino acids 1-100 of human Androgen Receptor (P10275).
Immunogen	MEVQLGLGRVYPRPPSKTYR GAFQNLFSVREVIQNPGRP HPEAASAAPPASLLLLQQQ QQQQQQQQQQQQQQQQQQ
Sequence	ETSPRQQQQQGEDGSPQAH



Immunoprecipitation analysis of 600 Mu g extracts of Mouse testis cells using 3 Mu g Androgen Receptor antibody (STJ11101730). Western blot was performed from the immunoprecipitate using Androgen Receptor antibody (STJ11101730) at a dilution of 1:1000.



Confocal imaging of a paraffin-embedded Human prostate cancer section using Androgen Receptor Rabbit monoclonal antibody (STJ11101730, dilution 1:200) followed by a further incubation with Cy3 Goat Anti-Rabbit IgG (H+L) (dilution 1:500) (Red). DAPI was used for nuclear staining (Blue). Objective: 40x. Perform high pressure antigen retrieval with 0.01 M citrate buffer (pH 6.0) prior to IF staining.



Immunohistochemistry analysis of Androgen Receptor in paraffin-embedded human prostate cancer using Androgen Receptor Rabbit monoclonal antibody (STJ11101730) at dilution of 1:500 (40x lens). Perform high pressure antigen retrieval with 10 mM citrate buffer pH 6.0 before commencing with immunohistochemistry staining protocol.

This product is suitable for in-vitro studies under the RESEARCH USE ONLY [RUO] licence. This product must not be used as for diagnostic or other medical purposes.
St John's Laboratory Ltd, Knowledge Dock Business Centre, University Way, London, E16 2RD | Tel: 0208 223 3081