

Anti-VIM antibody (367-466) [S7MR] (STJ11101727)
STJ11101727

GENERAL INFORMATION

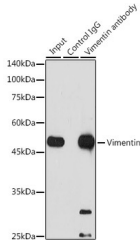
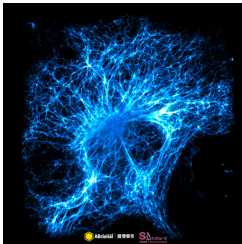
Product Type	Primary antibodies
Short Description	
Applications	WB/IHC-P/IF/ICC/IP/ELISA
Host/Source	Rabbit
Reactivity	Human/Mouse/Rat

PRODUCT PROPERTIES

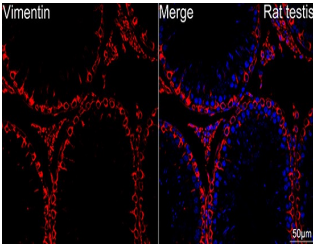
Clonality	Monoclonal
Clone ID	S7MR
Concentration	Lot specific
Conjugation	Unconjugated
Purification	Affinity purification
Dilution Range	WB:1:20000-1:120000 IHC-P:1:1000-1:4000 IF/ICC:1:200-1:2000 IP:0.5 Mu g-4 Mu g antibody for 200 Mu g-400 Mu g extracts of whole cells ELISA:Recommended starting concentration is 1 Mu g/mL. Please optimize the concentration based on yo
Formulation	PBS with 0.05% Proclin300, 0.05% BSA, 50% Glycerol, pH 7.3.
Isotype	IgG
Storage Instruction	Store at -20°C for up to 1 year from the date of receipt, and avoid repeat freeze-thaw cycles.

TARGET INFORMATION

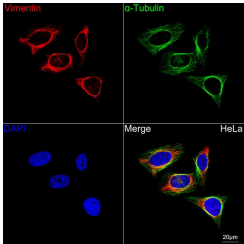
Gene ID	7431
Gene Symbol	VIM
Uniprot ID	VIME_HUMAN
Immunogen	
Immunogen Region	367-466
Specificity	A synthetic peptide corresponding to a sequence within amino acids 367-466 of human Vimentin (P08670).
Immunogen Sequence	DEIQNMKEEMARHLREYQDL LNVKMLDIEIATYRKLLG EESRISLPLPNFSSLNLRET NLDSLPLVDTHSKRTLLIKT VETRDGQVINETSQHDDLE



Immunoprecipitation analysis of 300 Mu g extracts of Jurkat cells using 3 Mu g [KD Validated] Vimentin Rabbit monoclonal antibody (STJ11101727). Western blot was performed from the immunoprecipitate using Vimentin antibody (STJ11101727) at a dilution of 1:1000.



Confocal imaging of paraffin-embedded Rat testis tissue using [KD Validated] Vimentin Rabbit monoclonal antibody (STJ11101727, dilution 1:200) followed by a further incubation with Cy3 Goat Anti-Rabbit IgG (H+L) (dilution 1:500) (Red). DAPI was used for nuclear staining (Blue). High pressure antigen retrieval performed with 0.01M Citrate Buffer (pH 6.0) prior to IF staining. Objective: 40x.



Confocal imaging of HeLa cells using [KD Validated] Vimentin Rabbit monoclonal antibody (STJ11101727, dilution 1:200) followed by a further incubation with Cy3 Goat Anti-Rabbit IgG (H+L) (dilution 1:500) (Red). The cells were counterstained with Alpha-Tubulin Mouse monoclonal antibody (dilution 1:400) followed by incubation with AB10A@ 488-conjugated Goat Anti-Mouse IgG (H+L) antibody (dilution 1:500) (Green). DAPI was used for nuclear staining (Blue). Objective: 100x.