

Anti-ATG3 antibody (1-100) [S8MR] (STJ11101718)
STJ11101718

GENERAL INFORMATION

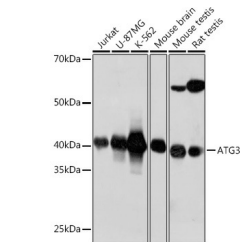
Product Type	Primary antibodies
Short Description	
Applications	WB/IHC-P/ELISA
Host/Source	Rabbit
Reactivity	Human/Mouse/Rat

PRODUCT PROPERTIES

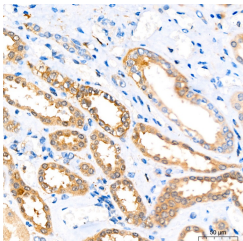
Clonality	Monoclonal
Clone ID	S8MR
Concentration	Lot specific
Conjugation	Unconjugated
Purification	Affinity purification
Dilution Range	WB:1:1000-1:2000 IHC-P:1:200-1:2000 ELISA:Recommended starting concentration is 1 µg/mL. Please optimize the concentration based on your specific assay requirements.
Formulation	PBS with 0.02% Sodium Azide, 0.05% BSA, 50% Glycerol, pH 7.3.
Isotype	IgG
Storage Instruction	Store at -20°C for up to 1 year from the date of receipt, and avoid repeat freeze-thaw cycles.

TARGET INFORMATION

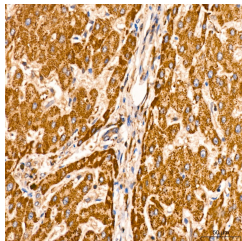
Gene ID	64422
Gene Symbol	ATG3
Uniprot ID	ATG3_HUMAN
Immunogen	
Immunogen Region	1-100
Specificity	A synthetic peptide corresponding to a sequence within amino acids 1-100 of human Apg3 (Atg3) (Q9NT62).
Immunogen Sequence	MQNVINTVKGKALEVAEYLT PVLKESKFKETGVITPEEFV AAGDHLVHHCPTWQWATGEE LKVKAYLPTGKQFLVTKNPV CYKRQKQMEYSDELEAIIEE



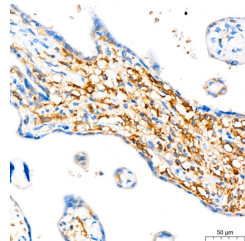
Western blot analysis of extracts of various cell lines, using ATG3 antibody (STJ11101718) at 1:1000 dilution. Secondary antibody: HRP Goat Anti-rabbit IgG (H+L) (STJ5000856) at 1:10000 dilution. Lysates/proteins: 25 µg per lane. Blocking buffer: 3% non-fat dry milk in TBST. Detection: ECL Basic Kit. Exposure time: 40s.



Immunohistochemistry analysis of ATG3 in paraffin-embedded human kidney tissue using ATG3 rabbit monoclonal antibody (STJ11101718) at a dilution of 1:200 (40x lens). High pressure antigen retrieval was performed with 0.01 M citrate buffer (pH 6.0) prior to immunohistochemistry staining.



Immunohistochemistry analysis of ATG3 in paraffin-embedded human liver tissue using ATG3 rabbit monoclonal antibody (STJ11101718) at a dilution of 1:200 (40x lens). High pressure antigen retrieval was performed with 0.01 M Tris-EDTA buffer (pH 9.0) prior to immunohistochemistry staining.



Immunohistochemistry analysis of ATG3 in paraffin-embedded human placenta tissue using ATG3 rabbit monoclonal antibody (STJ11101718) at a dilution of 1:200 (40x lens). High pressure antigen retrieval was performed with 0.01 M citrate buffer (pH 6.0) prior to immunohistochemistry staining.

This product is suitable for in-vitro studies under the RESEARCH USE ONLY [RUO] licence. This product must not be used as for diagnostic or other medical purposes.
St John's Laboratory Ltd, Knowledge Dock Business Centre, University Way, London, E16 2RD | Tel: 0208 223 3081