

**Anti-CTCF antibody (628-727) [S5MR] (STJ11101715)**  
STJ11101715

**GENERAL INFORMATION**

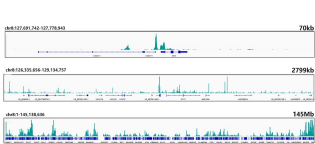
<b>Product Type</b>	Primary antibodies
<b>Short Description</b>	
<b>Applications</b>	WB/IF/ICC/IP/ELISA/ChIP/ChIP-seq/CUT&Tag
<b>Host/Source</b>	Rabbit
<b>Reactivity</b>	Human/Mouse/Rat

**PRODUCT PROPERTIES**

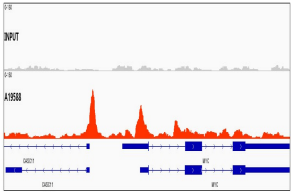
<b>Clonality</b>	Monoclonal
<b>Clone ID</b>	S5MR
<b>Concentration</b>	Lot specific
<b>Conjugation</b>	Unconjugated
<b>Purification</b>	Affinity purification
<b>Dilution Range</b>	WB:1:1000-1:4000 IF/ICC:1:200-1:800 IP:0.5 Mu g-4 Mu g antibody for 200 Mu g-400 Mu g extracts of whole cells ELISA:Recommended starting concentration is 1 Mu g/mL. Please optimize the concentration based on your specific assay requiremen
<b>Formulation</b>	PBS with 0.02% Sodium Azide, 0.05% BSA, 50% Glycerol, pH 7.3.
<b>Isotype</b>	IgG
<b>Storage Instruction</b>	Store at -20°C for up to 1 year from the date of receipt, and avoid repeat freeze-thaw cycles.

**TARGET INFORMATION**

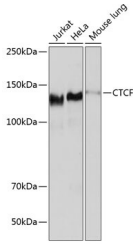
<b>Gene ID</b>	10664
<b>Gene Symbol</b>	CTCF
<b>Uniprot ID</b>	CTCF_HUMAN
<b>Immunogen</b>	
<b>Immunogen Region</b>	628-727
<b>Specificity</b>	A synthetic peptide corresponding to a sequence within amino acids 628-727 of human CTCF (P49711).
<b>Immunogen Sequence</b>	PAVEIEPEPEPQVTPAPP AKKRRGRPPGRTNQPKQNQP TAIQVEDQNTGAIENIIVE VKKEPDAEPAEGEEEEQPA ATDAPNGDLTPEMILSMMDR



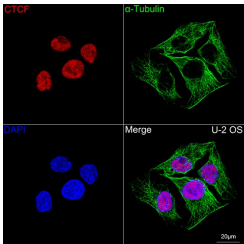
CUT&Tag was performed using the CUT&Tag Assay Kit (pAG-Tn5) for Illumina (RK20265) from 105 K562 cells with 2 ug CTCF rabbit monoclonal antibody, along with a Goat Anti-rabbit IgG (H+L). The CUT&Tag results indicate the enrichment pattern of CTCF in representative gene loci (MYC), as shown in figure.



Chromatin immunoprecipitations were performed with cross-linked chromatin from 293T cells and CTCF rabbit monoclonal antibody (STJ11101715). The ChIP sequencing results indicate the enrichment pattern of CTCF in selected genomic region and representative gene loci (MYC), as shown in figure.



Western blot analysis of extracts of various cell lines, using CTCF antibody (STJ11101715) at 1:1000 dilution. Secondary antibody: HRP Goat Anti-rabbit IgG (H+L) (STJS000856) at 1:10000 dilution. Lysates/proteins: 25 Mu g per lane. Blocking buffer: 3% non-fat dry milk in TBST. Detection: ECL Basic Kit. Exposure time: 30s.



Confocal imaging of U-2 OS cells using CTCF rabbit monoclonal antibody (STJ11101715, dilution 1:200) followed by a further incubation with Cy3 Goat Anti-rabbit IgG (H+L) (dilution 1:500) (Red). The cells were counterstained with Alpha-Tubulin mouse monoclonal antibody (dilution 1:400) followed by incubation with ABFluor 488-conjugated Goat Anti-mouse IgG (H+L) antibody (dilution 1:500) (Green). DAPI was used for nuclear staining (Blue). Objective: 100x.

This product is suitable for in-vitro studies under the RESEARCH USE ONLY [RUO] licence. This product must not be used as for diagnostic or other medical purposes.  
St John's Laboratory Ltd, Knowledge Dock Business Centre, University Way, London, E16 2RD | Tel: 0208 223 3081