

Anti-YY1 antibody (200-300) [S4MR] (STJ11101704)

STJ11101704

GENERAL INFORMATION

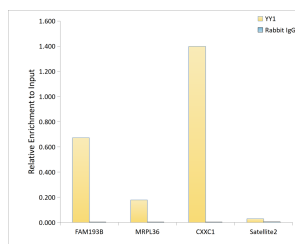
Product Type	Primary antibodies
Short Description	
Applications	WB/IF/ICC/IP/ELISA/ChIP
Host/Source	Rabbit
Reactivity	Human/Mouse/Rat

PRODUCT PROPERTIES

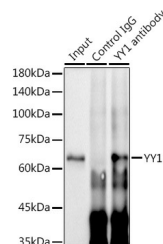
Clonality	Monoclonal
Clone ID	S4MR
Concentration	Lot specific
Conjugation	Unconjugated
Purification	Affinity purification
Dilution Range	WB:1:1000-1:6000 IF/ICC:1:50-1:400 IP:0.5 Mu g-4 Mu g antibody for 200 Mu g-400 Mu g extracts of whole cells ELISA:Recommended starting concentration is 1 Mu g/mL. Please optimize the concentration based on your specific assay requirement
Formulation	PBS with 0.02% Sodium Azide, 0.05% BSA, 50% Glycerol, pH 7.3.
Isotype	IgG
Storage Instruction	Store at -20°C for up to 1 year from the date of receipt, and avoid repeat freeze-thaw cycles.

TARGET INFORMATION

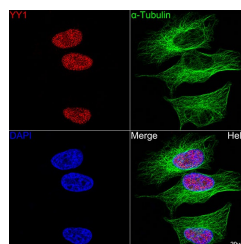
Gene ID	7528
Gene Symbol	YY1
Uniprot ID	TYY1_HUMAN
Immunogen	
Immunogen Region	200-300
Specificity	A synthetic peptide corresponding to a sequence within amino acids 200-300 of human YY1 (P25490).
Immunogen Sequence	PGNKKWEQKQVQIKTLEGEF SVTMWSSDEKKDIDHETVVE EQIIGENSPDYSEYMTGKK LPPGGIPGIDLSDPKQLAEF ARMKPRKIKEDDAPRTIACP H



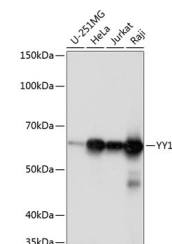
Chromatin immunoprecipitation analysis of extracts of 293T cells, using YY1 antibody (STJ11101704) and rabbit IgG. The amount of immunoprecipitated DNA was checked by quantitative PCR. Histogram was constructed by the ratios of the immunoprecipitated DNA to the input.



Immunoprecipitation analysis of 300 Mu g extracts of HeLa cells using 3 Mu g YY1 antibody (STJ11101704). Western blot was performed from the immunoprecipitate using YY1 antibody (STJ11101704) at a dilution of 1:2000.



Confocal imaging of HeLa cells using YY1 Rabbit monoclonal antibody (STJ11101704, dilution 1:50) (Red). The cells were counterstained with Alpha-Tubulin Mouse monoclonal antibody (dilution 1:400) (Green). DAPI was used for nuclear staining (blue). Objective: 100x.



Western blot analysis of various lysates using YY1 Rabbit monoclonal antibody (STJ11101704) at 1:1000 dilution. Secondary antibody: HRP Goat Anti-Rabbit IgG (H+L) (STJ500856) at 1:10000 dilution. Lysates/proteins: 25 Mu g per lane. Blocking buffer: 3% nonfat dry milk in TBST. Detection: ECL Basic Kit. Exposure time: 1s.

This product is suitable for in-vitro studies under the RESEARCH USE ONLY [RUO] licence. This product must not be used as for diagnostic or other medical purposes.
St John's Laboratory Ltd, Knowledge Dock Business Centre, University Way, London, E16 2RD | Tel: 0208 223 3081