

**Anti-STAT3 antibody (600-700) [S1MR] (STJ11101701)**  
STJ11101701

**GENERAL INFORMATION**

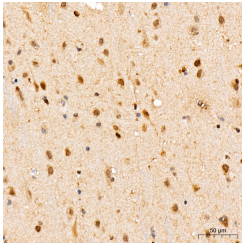
<b>Product Type</b>	Primary antibodies
<b>Short Description</b>	
<b>Applications</b>	WB/IHC-P/ELISA
<b>Host/Source</b>	Rabbit
<b>Reactivity</b>	Human/Mouse/Rat

**PRODUCT PROPERTIES**

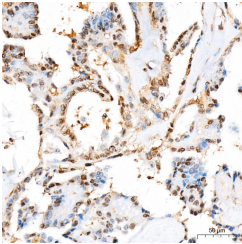
<b>Clonality</b>	Monoclonal
<b>Clone ID</b>	S1MR
<b>Concentration</b>	Lot specific
<b>Conjugation</b>	Unconjugated
<b>Purification</b>	Affinity purification
<b>Dilution Range</b>	WB:1:1000-1:6000 IHC-P:1:200-1:2000 ELISA:Recommended starting concentration is 1 Mu g/mL. Please optimize the concentration based on your specific assay requirements.
<b>Formulation</b>	PBS with 0.02% Sodium Azide, 0.05% BSA, 50% Glycerol, pH 7.3.
<b>Isotype</b>	IgG
<b>Storage Instruction</b>	Store at -20°C for up to 1 year from the date of receipt, and avoid repeat freeze-thaw cycles.

**TARGET INFORMATION**

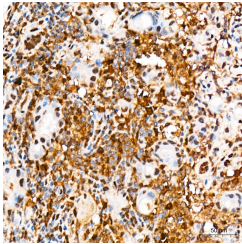
<b>Gene ID</b>	6774
<b>Gene Symbol</b>	STAT3
<b>Uniprot ID</b>	STAT3_HUMAN
<b>Immunogen</b>	
<b>Immunogen Region</b>	600-700
<b>Specificity</b>	A synthetic peptide corresponding to a sequence within amino acids 600-700 of human STAT3 (P40763).
<b>Immunogen Sequence</b>	TKPPGTFLRRFSESSKEGGV TFWVEKDISGKTQIQSVEP YTKQQLNNMSFAEIMGYKI MDATNILVSPLYLYPDIPK EEAFGKYCRPESQEHPADP G



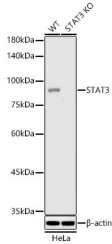
Immunohistochemistry analysis of STAT3 in paraffin-embedded human brain tissue using [KO Validated] STAT3 Rabbit monoclonal antibody (STJ11101701) at a dilution of 1:200 (40x lens). High pressure antigen retrieval was performed with 0.01 M citrate buffer (pH 6.0) prior to immunohistochemistry staining.



Immunohistochemistry analysis of STAT3 in paraffin-embedded human thyroid cancer tissue using [KO Validated] STAT3 Rabbit monoclonal antibody (STJ11101701) at a dilution of 1:200 (40x lens). High pressure antigen retrieval was performed with 0.01 M citrate buffer (pH 6.0) prior to immunohistochemistry staining.



Immunohistochemistry analysis of STAT3 in paraffin-embedded human breast tissue using [KO Validated] STAT3 Rabbit monoclonal antibody (STJ11101701) at a dilution of 1:200 (40x lens). High pressure antigen retrieval was performed with 0.01 M citrate buffer (pH 6.0) prior to immunohistochemistry staining.



Western blot analysis of lysates from wild type (WT) and STAT3 knockout (KO) HeLa (KO) cells, using [KO Validated] STAT3 Rabbit monoclonal antibody (STJ11101701) at 1:1000 dilution. Secondary antibody: HRP Goat Anti-Rabbit IgG (H+L) (STJSD00856) at 1:10000 dilution. Lysates/proteins: 25 Mu g per lane. Blocking buffer: 3% nonfat dry milk in TBST. Detection: ECL Basic Kit. Exposure time: 1s.