

Anti-RARA antibody (1-100) [S3MR] (STJ11101693)

STJ11101693

GENERAL INFORMATION

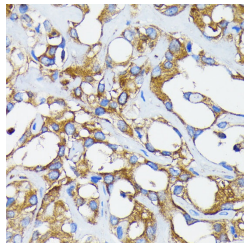
Product Type	Primary antibodies
Short Description	
Applications	WB/IHC-P/ELISA
Host/Source	Rabbit
Reactivity	Human/Mouse/Rat

PRODUCT PROPERTIES

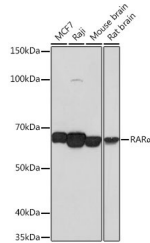
Clonality	Monoclonal
Clone ID	S3MR
Concentration	Lot specific
Conjugation	Unconjugated
Purification	Affinity purification
Dilution Range	WB:1:1000-1:2000 IHC-P:1:100-1:500 ELISA:Recommended starting concentration is 1 Mu g/mL. Please optimize the concentration based on your specific assay requirements.
Formulation	PBS with 0.02% Sodium Azide, 0.05% BSA, 50% Glycerol, pH 7.3.
Isotype	IgG
Storage Instruction	Store at -20°C for up to 1 year from the date of receipt, and avoid repeat freeze-thaw cycles.

TARGET INFORMATION

Gene ID	5914
Gene Symbol	RARA
Uniprot ID	RARA_HUMAN
Immunogen	
Immunogen Region	1-100
Specificity	A synthetic peptide corresponding to a sequence within amino acids 1-100 of human RAR Alpha (P10276).
Immunogen Sequence	MASNSSSCPTPGGGHLNGYP VPPYAFFFPMLGGLSPPGA LTTLQHQLPVSGYSTPSPAT IETQSSSSSEIIVSPSPPPP LPRIYKPCFVCQDKSSGYHY



Immunohistochemistry analysis of RAR Alpha in paraffin-embedded human breast cancer using RAR Alpha Rabbit monoclonal antibody (STJ11101693) at dilution of 1:100 (40x lens). Perform microwave antigen retrieval with 10 mM PBS buffer pH 7.2 before commencing with immunohistochemistry staining protocol.



Western blot analysis of various lysates using RAR Alpha Rabbit monoclonal antibody (STJ11101693) at 1:1000 dilution. Secondary antibody: HRP Goat Anti-Rabbit IgG (H+L) (STJS000856) at 1:10000 dilution. Lysates/proteins: 25 Mu g per lane. Blocking buffer: 3% nonfat dry milk in TBST. Detection: ECL Basic Kit. Exposure time: 1 min.