

Anti-LMNA antibody (403-572) [S6MR] (STJ11101676)
STJ11101676

GENERAL INFORMATION

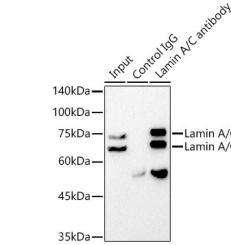
Product Type	Primary antibodies
Short Description	
Applications	WB/IHC-P/IF/ICC/IP/ELISA
Host/Source	Rabbit
Reactivity	Human/Mouse/Rat

PRODUCT PROPERTIES

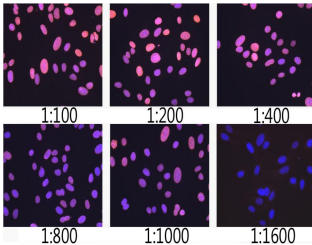
Clonality	Monoclonal
Clone ID	S6MR
Concentration	Lot specific
Conjugation	Unconjugated
Purification	Affinity purification
Dilution Range	WB:1:50000-1:300000 IHC-P:1:1000-1:4000 IF/ICC:1:100-1:800 IP:0.5 Mu g-4 Mu g antibody for 200 Mu g-400 Mu g extracts of whole cells ELISA:Recommended starting concentration is 1 Mu g/mL. Please optimize the concentration based on you PBS with 0.05% Proclin300, 0.05% BSA, 50% Glycerol, pH 7.3.
Formulation	
Isotype	IgG
Storage	Store at -20°C for up to 1 year from the date of receipt, and avoid repeat freeze-thaw cycles.
Instruction	

TARGET INFORMATION

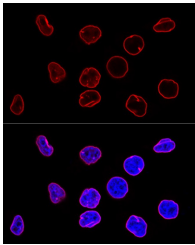
Gene ID	4000
Gene Symbol	LMNA
Uniprot ID	LMNA_HUMAN
Immunogen	
Immunogen Region	403-572
Specificity	Recombinant fusion protein containing a sequence corresponding to amino acids 403-572 of human Lamin A/C (NP_733821.1).
Immunogen Sequence	SSHSSTQGGGVTKKRKLE STESRSSFSQHARTSGRVAV EEVDEEGKFVRLRNKSNEDQ SMGNWQIKRQNGDDPLLTYR PPPKFTLKAGQVVTIWAAGA GATHSPPTDLVWKAQNTWGC GNSLRTALINSTGEEVAMRK LVRSVTVVEDEDEDGDDLL HHHHGSHCSS



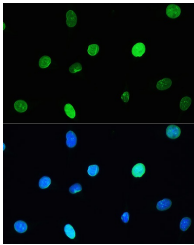
Immunoprecipitation analysis of 300 Mu g extracts from PC-12 cells using 3 Mu g [KO Validated] Lamin A/C Rabbit monoclonal antibody (STJ11101676). Western blot was performed from the immunoprecipitate using [KO Validated] Lamin A/C Rabbit monoclonal antibody (STJ11101676) at a dilution of 1:100000.



Immunofluorescence analysis of U-2 OS cells using [KO Validated] Lamin A/C Rabbit monoclonal antibody (STJ11101676) at dilution of 1:100- 1:1600. Blue: DAPI for nuclear staining.



Confocal immunofluorescence analysis of HeLa cells using [KO Validated] Lamin A/C Rabbit monoclonal antibody (STJ11101676) at dilution of 1:100. Blue: DAPI for nuclear staining.



Immunofluorescence analysis of L929 cells using [KO Validated] Lamin A/C Rabbit monoclonal antibody (STJ11101676) at dilution of 1:200. Blue: DAPI for nuclear staining.

This product is suitable for in-vitro studies under the RESEARCH USE ONLY [RUO] licence. This product must not be used as for diagnostic or other medical purposes.
St John's Laboratory Ltd, Knowledge Dock Business Centre, University Way, London, E16 2RD | Tel: 0208 223 3081