

Anti-EPCAM antibody (215-314) [S4MR] (STJ11101674)

STJ11101674

GENERAL INFORMATION

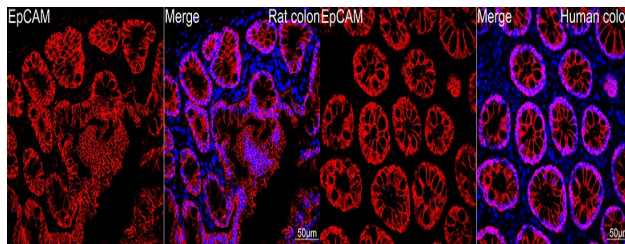
Product Type	Primary antibodies
Short Description	
Applications	WB/IF/CC/ELISA
Host/Source	Rabbit
Reactivity	Human/Mouse/Rat

PRODUCT PROPERTIES

Clonality	Monoclonal
Clone ID	S4MR
Concentration	Lot specific
Conjugation	Unconjugated
Purification	Affinity purification
Dilution Range	WB:1:500-1:2000 IF/CC:1:50-1:200 ELISA:Recommended starting concentration is 1 Mu g/mL. Please optimize the concentration based on your specific assay requirements.
Formulation	PBS with 0.02% Sodium Azide, 0.05% BSA, 50% Glycerol, pH 7.3.
Isotype	IgG
Storage Instruction	Store at -20°C for up to 1 year from the date of receipt, and avoid repeat freeze-thaw cycles.

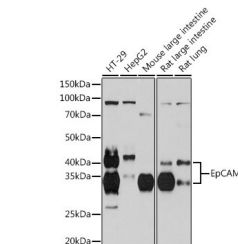
TARGET INFORMATION

Gene ID	4072
Gene Symbol	EPCAM
Uniprot ID	EPCAM_HUMAN
Immunogen	
Immunogen Region	215-314
Specificity	A synthetic peptide corresponding to a sequence within amino acids 215-314 of human EpCAM (P16422). YFEKDVKGESLFHSHKMDLT VNGEQLDLDPGQTLIYYVDE KAPEFSMQGLKAGVIAVIVV WIAVVAGIVVLVISRKKRM
Sequence	AKYEKAEIKEMGEMHRELNA



Confocal imaging of Rat colon using EpCAM Rabbit monoclonal antibody (STJ11101674, dilution 1:50) (Red). DAPI was used for nuclear staining (blue). Objective: 40x.

Confocal imaging of Human colon using EpCAM Rabbit monoclonal antibody (STJ11101674, dilution 1:50) (Red). DAPI was used for nuclear staining (blue). Objective: 40x.



Western blot analysis of extracts of various cell lines, using EpCAM Rabbit monoclonal antibody (STJ11101674) at 1:1000 dilution. Secondary antibody: HRP Goat Anti-Rabbit IgG (H+L) (STJS000856) at 1:10000 dilution. Lysates/proteins: 25 Mu g per lane. Blocking buffer: 3% nonfat dry milk in TBST. Detection: ECL Basic Kit. Exposure time: 3min.

This product is suitable for in-vitro studies under the RESEARCH USE ONLY [RUO] licence. This product must not be used as for diagnostic or other medical purposes.
St John's Laboratory Ltd, Knowledge Dock Business Centre, University Way, London, E16 2RD | Tel: 0208 223 3081