

Anti-WNT5A antibody (281-380) [S0MR] (STJ11101670)

STJ11101670

GENERAL INFORMATION

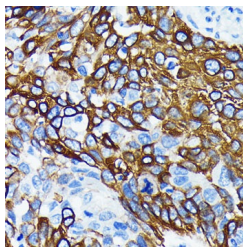
| | |
|--------------------------|--------------------|
| Product Type | Primary antibodies |
| Short Description | |
| Applications | WB/IHC-P/ELISA |
| Host/Source | Rabbit |
| Reactivity | Human |

PRODUCT PROPERTIES

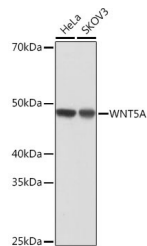
| | |
|----------------------------|---|
| Clonality | Monoclonal |
| Clone ID | S0MR |
| Concentration | Lot specific |
| Conjugation | Unconjugated |
| Purification | Affinity purification |
| Dilution Range | WB:1:1000-1:6000 IHC-P:1:100-1:1000 ELISA:Recommended starting concentration is 1 Mu g/mL. Please optimize the concentration based on your specific assay requirements. |
| Formulation | PBS with 0.02% Sodium Azide, 0.05% BSA, 50% Glycerol, pH 7.3. |
| Isotype | IgG |
| Storage Instruction | Store at -20°C for up to 1 year from the date of receipt, and avoid repeat freeze-thaw cycles. |

TARGET INFORMATION

| | |
|---------------------------|--|
| Gene ID | 7474 |
| Gene Symbol | WNT5A |
| Uniprot ID | WNT5A_HUMAN |
| Immunogen | |
| Region | 281-380 |
| Specificity | A synthetic peptide corresponding to a sequence within amino acids 281-380 of human WNT5A (P41221). |
| Immunogen Sequence | RGKLVQVNSRFNSPTTQDLV YIDPSPDYCVRNESGTSLGT QGRLCNKTSEGMDGCELMCC GRGYDQFKTVQTERCHCKFH WCCYVKCKKCTEIVDQFVCK |



Immunohistochemistry analysis of paraffin-embedded human lung cancer using WNT5A Rabbit monoclonal antibody (STJ11101670) at dilution of 1:100 (40x lens). Perform microwave antigen retrieval with 10 mM PBS buffer pH 7.2 before commencing with immunohistochemistry staining protocol.



Western blot analysis of extracts of various cell lines, using WNT5A antibody (STJ11101670) at 1:1000 dilution. Secondary antibody: HRP Goat Anti-Rabbit IgG (H+L) (STJS000856) at 1:10000 dilution. Lysates/proteins: 25 Mu g per lane. Blocking buffer: 3% nonfat dry milk in TBST. Detection: ECL Basic Kit. Exposure time: 10s.