

Anti-TRAF2 antibody (190-350) [S6MR] (STJ11101666)
STJ11101666

GENERAL INFORMATION

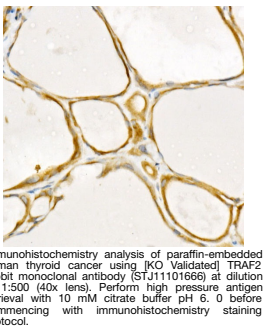
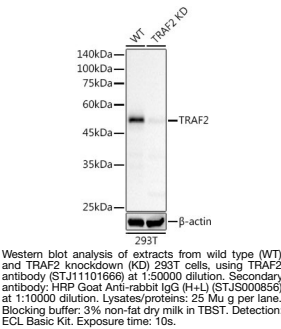
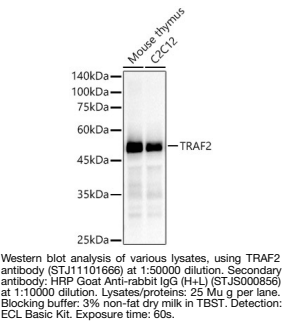
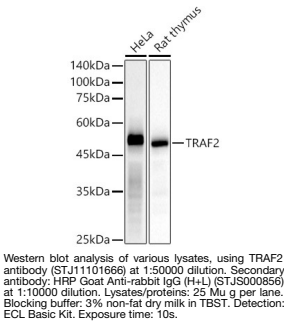
Product Type	Primary antibodies
Short Description	
Applications	WB/IP/ELISA
Host/Source	Rabbit
Reactivity	Human/Mouse/Rat

PRODUCT PROPERTIES

Clonality	Monoclonal
Clone ID	S6MR
Concentration	Lot specific
Conjugation	Unconjugated
Purification	Affinity purification
Dilution	WB:1:25000-1:100000
Range	IP:0.5 Mu g-4 Mu g antibody for 200 Mu g-400 Mu g extracts of whole cells ELISA:Recommended starting concentration is 1 Mu g/mL. Please optimize the concentration based on your specific assay requirements.
Formulation	PBS with 0.05% Proclin300, 0.05% BSA, 50% Glycerol, pH 7.3.
Isotype	IgG
Storage Instruction	Store at -20°C for up to 1 year from the date of receipt, and avoid repeat freeze-thaw cycles.

TARGET INFORMATION

Gene ID	7186
Gene Symbol	TRAF2
Uniprot ID	TRAF2_HUMAN
Immunogen	
Immunogen Region	190-350
Specificity	Recombinant fusion protein containing a sequence corresponding to amino acids 190-350 of human TRAF2 (NP_066961.2).
Immunogen Sequence	DGCGKKKIPREKFQDHVKTC GKCRVPCRFAIGCLETVEG EKQQEHEVQWLREHLAMLLS SVLEAKPLLGDQSHAGSELL QRCSLEKKKTATFENIVCVL NREVERVAMTAEACSRQHRL DQDKIEALSSKVQQLERSIG LKDLAMADLEQKVLEMEAST Y



This product is suitable for in-vitro studies under the RESEARCH USE ONLY [RUO] licence. This product must not be used as for diagnostic or other medical purposes.
St John's Laboratory Ltd, Knowledge Dock Business Centre, University Way, London, E16 2RD | Tel: 0208 223 3081