

Anti-SUMO1 antibody (1-101) [S8MR] (STJ11101658)
STJ11101658

GENERAL INFORMATION

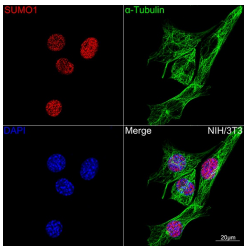
Product Type	Primary antibodies
Short Description	
Applications	WB/IHC-P/IF/ICC/ELISA
Host/Source	Rabbit
Reactivity	Human/Mouse/Rat

PRODUCT PROPERTIES

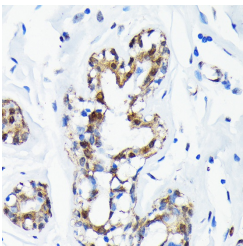
Clonality	Monoclonal
Clone ID	S8MR
Concentration	Lot specific
Conjugation	Unconjugated
Purification	Affinity purification
Dilution Range	WB:1:1000-1:2000 IHC-P:1:2000-1:10000 IF/ICC:1:200-1:400 ELISA:Recommended starting concentration is 1 Mu g/mL. Please optimize the concentration based on your specific assay requirements.
Formulation	PBS with 0.02% Sodium Azide, 0.05% BSA, 50% Glycerol, pH 7.3.
Isotype	IgG
Storage Instruction	Store at -20°C for up to 1 year from the date of receipt, and avoid repeat freeze-thaw cycles.

TARGET INFORMATION

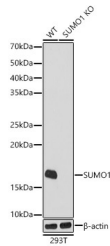
Gene ID	7341
Gene Symbol	SUMO1
Uniprot ID	SUMO1_HUMAN
Immunogen	
Immunogen Region	1-101
Specificity	A synthetic peptide corresponding to a sequence within amino acids 1-101 of human Sumo 1 (P63165).
Immunogen Sequence	MSDQEAKPSTEDLGDKKEGE YIKLVIGQDSSEIHFKVKM TTHLKKLKESYQCRQGVPMN SLRFLFEGQRIADNHTPKEL GMEEEDVIEVYQQTGGHST V



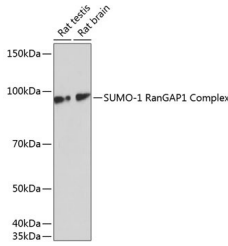
Confocal imaging of NIH/3T3 cells using [KO Validated] SUMO1 Rabbit monoclonal antibody (STJ11101658, dilution 1:100) (Red). The cells were counterstained with Alpha-Tubulin Mouse monoclonal antibody (dilution 1:400) (Green). DAPI was used for nuclear staining (blue). Objective: 100x.



Immunohistochemistry analysis of SUMO1 in paraffin-embedded human breast cancer using SUMO1 Rabbit monoclonal antibody (STJ11101658) at dilution of 1:100 (40x lens). Perform microwave antigen retrieval with 10 mM PBS buffer pH 7.2 before commencing with immunohistochemistry staining protocol.



Western blot analysis of lysates from wild type (WT) and SUMO1 knockout (KO) 293T cells, using [KO Validated] SUMO1 Rabbit monoclonal antibody (STJ11101658) at 1:1000 dilution. Secondary antibody: HRP Goat Anti-Rabbit IgG (H+L) (STJS000856) at 1:10000 dilution. Lysates/proteins: 25 Mu g per lane. Blocking buffer: 3% nonfat dry milk in TBST. Detection: ECL Basic Kit. Exposure time: 10s.



Western blot analysis of various lysates using [KO Validated] SUMO1 Rabbit monoclonal antibody (STJ11101658) at 1:1000 dilution. Secondary antibody: HRP Goat Anti-Rabbit IgG (H+L) (STJS000856) at 1:10000 dilution. Lysates/proteins: 25 Mu g per lane. Blocking buffer: 3% nonfat dry milk in TBST. Detection: ECL Basic Kit. Exposure time: 1min.

This product is suitable for in-vitro studies under the RESEARCH USE ONLY [RUO] licence. This product must not be used as for diagnostic or other medical purposes.
St John's Laboratory Ltd, Knowledge Dock Business Centre, University Way, London, E16 2RD | Tel: 0208 223 3081