

**Anti-SOX2 antibody (1-100) [S5MR] (STJ11101655)**  
STJ11101655

**GENERAL INFORMATION**

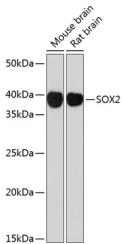
<b>Product Type</b>	Primary antibodies
<b>Short Description</b>	
<b>Applications</b>	WB/IF/ICC/ELISA
<b>Host/Source</b>	Rabbit
<b>Reactivity</b>	Mouse/Rat

**PRODUCT PROPERTIES**

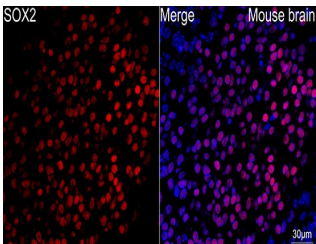
<b>Clonality</b>	Monoclonal
<b>Clone ID</b>	S5MR
<b>Concentration</b>	Lot specific
<b>Conjugation</b>	Unconjugated
<b>Purification</b>	Affinity purification
<b>Dilution Range</b>	WB:1:1000-1:2000 IF/ICC:1:100-1:800 ELISA:Recommended starting concentration is 1 Mu g/mL. Please optimize the concentration based on your specific assay requirements.
<b>Formulation</b>	PBS with 0.02% Sodium Azide, 0.05% BSA, 50% Glycerol, pH 7.3.
<b>Isotype</b>	IgG
<b>Storage Instruction</b>	Store at -20°C for up to 1 year from the date of receipt, and avoid repeat freeze-thaw cycles.

**TARGET INFORMATION**

<b>Gene ID</b>	6657
<b>Gene Symbol</b>	SOX2
<b>Uniprot ID</b>	SOX2_HUMAN
<b>Immunogen</b>	
<b>Immunogen Region</b>	1-100
<b>Specificity</b>	A synthetic peptide corresponding to a sequence within amino acids 1-100 of human SOX2 (NP_003097.1).
<b>Immunogen Sequence</b>	MYNMMETELKPPGPQQTSGG GGGNSTAAAAGGNQKNSPDR VKRPMNAFMVWSRGQRRKMA QENPKMHNSEISKRLGAEWK LLSETEKRPFIDEAKRLRAL



Western blot analysis of extracts of various cell lines, using SOX2 antibody (STJ11101655) at 1:1000 dilution. Secondary antibody: HRP Goat Anti-rabbit IgG (H+L) (STJS000856) at 1:10000 dilution. Lysates/proteins: 25 Mu g per lane. Blocking buffer: 3% non-fat dry milk in TBST. Detection: ECL Basic Kit. Exposure time: 90s.



Confocal imaging of mouse brain (frozen section) using SOX2 rabbit monoclonal antibody (STJ11101655, at dilution of 1:100) (Red). DAPI was used for nuclear staining (blue). Objective: 40x. Perform microwave antigen retrieval with 10 mM citrate buffer pH 6. 0 before commencing with IF staining protocol.

This product is suitable for in-vitro studies under the RESEARCH USE ONLY [RUO] licence. This product must not be used as for diagnostic or other medical purposes.  
St John's Laboratory Ltd, Knowledge Dock Business Centre, University Way, London, E16 2RD | Tel: 0208 223 3081