

**Anti-S100A4 antibody (2-101) [S6MR] (STJ11101646)**  
STJ11101646

**GENERAL INFORMATION**

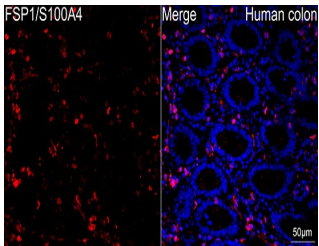
|                          |                       |
|--------------------------|-----------------------|
| <b>Product Type</b>      | Primary antibodies    |
| <b>Short Description</b> |                       |
| <b>Applications</b>      | WB/IHC-P/IF/ICC/ELISA |
| <b>Host/Source</b>       | Rabbit                |
| <b>Reactivity</b>        | Human/Mouse/Rat       |

**PRODUCT PROPERTIES**

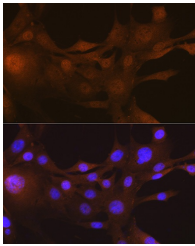
|                       |  |
|-----------------------|--|
| <b>Clonality</b>      | Monoclonal   |
| <b>Clone ID</b>       | S6MR   |
| <b>Concentration</b>  | Lot specific   |
| <b>Conjugation</b>    | Unconjugated   |
| <b>Purification</b>   | Affinity purification  |
| <b>Dilution Range</b> | WB:1:1000-1:2000<br>IHC-P:1:200-1:2000<br>IF/ICC:1:50-1:200<br>ELISA:Recommended starting concentration is 1 Mu g/mL. Please optimize the concentration based on your specific assay requirements. |
| <b>Formulation</b>    | PBS with 0.02% Sodium Azide, 0.05% BSA, 50% Glycerol, pH 7.3.  |
| <b>Isotype</b>        | IgG  |
| <b>Storage</b>        | Store at -20°C for up to 1 year from the date of receipt, and avoid repeat freeze-thaw cycles.   |
| <b>Instruction</b>    |  |

**TARGET INFORMATION**

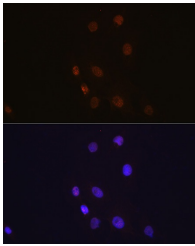
|                    |   |
|--------------------|---|
| <b>Gene ID</b>     | 6275  |
| <b>Gene Symbol</b> | S100A4  |
| <b>Uniprot ID</b>  | S10A4_HUMAN   |
| <b>Immunogen</b>   |   |
| <b>Immunogen</b>   | 2-101   |
| <b>Region</b>      |   |
| <b>Specificity</b> | Recombinant fusion protein containing a sequence corresponding to amino acids 2-101 of human S100A4 (P26447). |
| <b>Immunogen</b>   | ACPLEKALDVMVSTFHKYSG KEGDKFKLNKSELKELLTRE LPSFLGKRTDEAAAFQKLMSN LDSNRDNEVDFQEYCVFLSC                          |
| <b>Sequence</b>    | IAMMCNEFFEGFPDKQPRKK  |



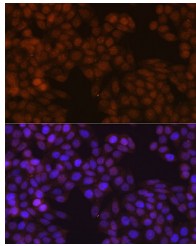
Confocal imaging of a paraffin-embedded Human colon using FSP1/S100A4 Rabbit monoclonal antibody (STJ11101646, dilution 1:100) followed by a further incubation with Cy3 Goat Anti-Rabbit IgG (H+L) (dilution 1:500) (Red). DAPI was used for nuclear staining (Blue). Objective: 40x. Perform high pressure antigen retrieval with 0.01 M citrate buffer (pH 6.0) prior to IF staining.



Immunofluorescence analysis of NIH-3T3 cells using FSP1/S100A4 Rabbit monoclonal antibody (STJ11101646) at dilution of 1:100 (40x lens). Secondary antibody: Cy3 Goat Anti-Rabbit IgG (H+L) at 1:500 dilution. Blue: DAPI for nuclear staining.



Immunofluorescence analysis of C6 cells using FSP1/S100A4 Rabbit monoclonal antibody (STJ11101646) at dilution of 1:100 (40x lens). Secondary antibody: Cy3 Goat Anti-Rabbit IgG (H+L) at 1:500 dilution. Blue: DAPI for nuclear staining.



Immunofluorescence analysis of HeLa cells using FSP1/S100A4 Rabbit monoclonal antibody (STJ11101646) at dilution of 1:100 (40x lens). Secondary antibody: Cy3 Goat Anti-Rabbit IgG (H+L) at 1:500 dilution. Blue: DAPI for nuclear staining.

This product is suitable for in-vitro studies under the RESEARCH USE ONLY [RUO] licence. This product must not be used as for diagnostic or other medical purposes.  
St John's Laboratory Ltd, Knowledge Dock Business Centre, University Way, London, E16 2RD | Tel: 0208 223 3081