

Anti-RXRA antibody (1-100) [S2MR] (STJ11101642)

STJ11101642

GENERAL INFORMATION

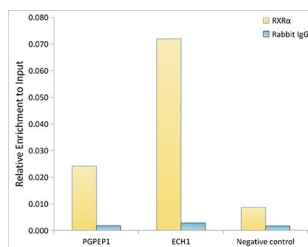
Product Type	Primary antibodies
Short Description	
Applications	WB/IF/ICC/IP/ELISA/ChIP/ChIP-seq
Host/Source	Rabbit
Reactivity	Human/Mouse/Rat

PRODUCT PROPERTIES

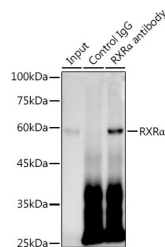
Clonality	Monoclonal
Clone ID	S2MR
Concentration	Lot specific
Conjugation	Unconjugated
Purification	Affinity purification
Dilution Range	WB:1:1000-1:2000 IF/ICC:1:100-1:1000 IP:0.5 Mu g-4 Mu g antibody for 200 Mu g-400 Mu g extracts of whole cells ELISA:Recommended starting concentration is 1 Mu g/mL. Please optimize the concentration based on your specific assay requireme
Formulation	PBS with 0.02% Sodium Azide, 0.05% BSA, 50% Glycerol, pH 7.3.
Isotype	IgG
Storage	Store at -20°C for up to 1 year from the date of receipt, and avoid repeat freeze-thaw cycles.
Instruction	

TARGET INFORMATION

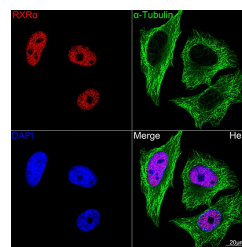
Gene ID	6256
Gene Symbol	RXRA
Uniprot ID	RXRA_HUMAN
Immunogen	
Immunogen Region	1-100
Specificity	A synthetic peptide corresponding to a sequence within amino acids 1-100 of human RXR Alpha (P19793).
Immunogen Sequence	MDTKHFLPLDFSTQVNSSLT SPTGRGSMAPSLHPSLGPG IGSPQLHSPISLSSPING MGPPFVSISSPMGPHMSVP TTPTLGSTGSPQLSPMNP



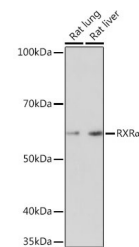
Chromatin immunoprecipitation analysis of extracts from HepG2 cells, using RXR Alpha antibody (STJ11101642) and rabbit IgG. The amount of immunoprecipitated DNA was checked by quantitative PCR. Histogram was constructed by the ratios of the immunoprecipitated DNA to the input.



Immunoprecipitation analysis of 300 Mu g extracts from HepG2 cells using 3 Mu g RXR Alpha antibody (STJ11101642). Western blot was performed from the immunoprecipitate using RXR Alpha antibody (STJ11101642) at a dilution of 1:1000.



Confocal imaging of HeLa cells using RXR Alpha Rabbit monoclonal antibody (STJ11101642, dilution 1:100) (Red). The cells were counterstained with Alpha-Tubulin (Green). DAPI was used for nuclear staining (blue). Objective: 100x.



Western blot analysis of various lysates using RXR Alpha Rabbit monoclonal antibody (STJ11101642) at 1:1000 dilution. Secondary antibody: HRP Goat Anti-Rabbit IgG (H+L) (STJSD00856) at 1:10000 dilution. Lysates/proteins: 25 Mu g per lane. Blocking buffer: 3% nonfat dry milk in TBST. Detection: ECL Enhanced Kit. Exposure time: 90s.

This product is suitable for in-vitro studies under the RESEARCH USE ONLY [RUO] licence. This product must not be used as for diagnostic or other medical purposes.
St John's Laboratory Ltd, Knowledge Dock Business Centre, University Way, London, E16 2RD | Tel: 0208 223 3081