

Anti-NOTCH1 antibody (2456-2555) [S7MR] (STJ11101627)

STJ11101627

GENERAL INFORMATION

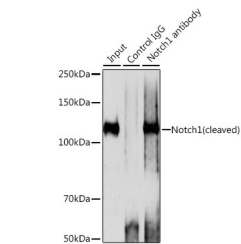
Product Type	Primary antibodies
Short Description	
Applications	WB/IP/ELISA
Host/Source	Rabbit
Reactivity	Human/Mouse

PRODUCT PROPERTIES

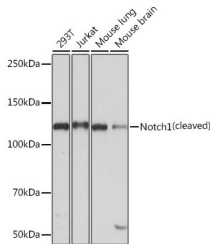
Clonality	Monoclonal
Clone ID	S7MR
Concentration	Lot specific
Conjugation	Unconjugated
Purification	Affinity purification
Dilution Range	WB:1:500-1:2000 IP:0.5 Mu g-4 Mu g antibody for 200 Mu g-400 Mu g extracts of whole cells ELISA:Recommended starting concentration is 1 Mu g/mL. Please optimize the concentration based on your specific assay requirements.
Formulation	PBS with 0.02% Sodium Azide, 0.05% BSA, 50% Glycerol, pH 7.3.
Isotype	IgG
Storage Instruction	Store at -20°C for up to 1 year from the date of receipt, and avoid repeat freeze-thaw cycles.

TARGET INFORMATION

Gene ID	4851
Gene Symbol	NOTCH1
Uniprot ID	NOTC1_HUMAN
Immunogen	
Immunogen Region	2456-2555
Specificity	A synthetic peptide corresponding to a sequence within amino acids 2456-2555 of human Notch1 (P46531).
Immunogen Sequence	ILPQESPALPTSLPSSLVPP VTAAQFLTPPSQHSYSSPVD NTPSHQLQVPEHPFLTPSPE SPDQWSSSSPHSNVSDWSEG VSSPPTSMQSQIARIPEAFK



Immunoprecipitation analysis of 200 Mu g extracts of 293T cells using 3 Mu g Notch1 antibody (STJ11101627). Western blot was performed from the immunoprecipitate using Notch1 antibody (STJ11101627) at a dilution of 1:1000.



Western blot analysis of various lysates using Notch1 Rabbit monoclonal antibody (STJ11101627) at 1:1000 dilution. Secondary antibody: HRP Goat Anti-Rabbit IgG (H+L) (STJS000856) at 1:10000 dilution. Lysates/proteins: 25 Mu g per lane. Blocking buffer: 3% nonfat dry milk in TBST. Detection: ECL Basic Kit. Exposure time: 3min.

This product is suitable for in-vitro studies under the RESEARCH USE ONLY [RUO] licence. This product must not be used as for diagnostic or other medical purposes.
St John's Laboratory Ltd, Knowledge Dock Business Centre, University Way, London, E16 2RD | Tel: 0208 223 3081