

Anti-GAPDH antibody (4-335) [S4MR] (STJ11101594)
STJ11101594

GENERAL INFORMATION

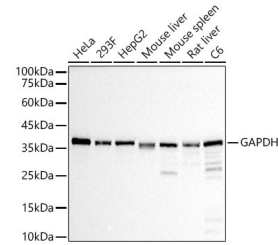
Product Type	Primary antibodies
Short Description	
Applications	WB/IHC-P/IF/ICC/ELISA
Host/Source	Rabbit
Reactivity	Human/Mouse/Rat

PRODUCT PROPERTIES

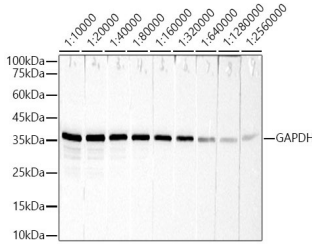
Clonality	Monoclonal
Clone ID	S4MR
Concentration	Lot specific
Conjugation	Unconjugated
Purification	Affinity purification
Dilution	WB:1:50000-1:200000
Range	IHC-P:1:500-1:1000 IF/ICC:1:50-1:200 ELISA:Recommended starting concentration is 1 Mu g/mL. Please optimize the concentration based on your specific assay requirements.
Formulation	PBS with 0.05% Proclin300, 0.05% BSA, 50% Glycerol, pH 7.3.
Isotype	IgG
Storage	Store at -20°C for up to 1 year from the date of receipt, and avoid repeat freeze-thaw cycles.
Instruction	

TARGET INFORMATION

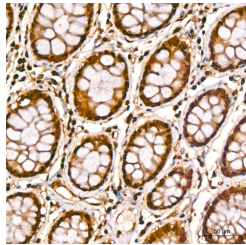
Gene ID	2597
Gene Symbol	GAPDH
Uniprot ID	G3P_HUMAN
Immunogen	
Immunogen Region	4-335
Specificity	Recombinant fusion protein containing a sequence corresponding to amino acids 4-335 of human GAPDH (NP_002037.2).
Immunogen Sequence	VKVGVNGFGRIGRLVTRAAF NSGKVDIVAINDPFIDLNYM VYMFQYDSTHGKFHGTVKAE NGKLVINGNPITIFQERDPS LKIKWDAGAEYVVESTGVFT TMEKAGAHLGGGAKRVIISA PSADAPMFVMGVNHEKYDNS LKIISNASCTTNCLAPLAKV IHDNFGIVEGLMTTTHAITA TQKTVDGPGSKLWRDGRGAL QNIIPASTGAAKAVGKVIPE LNGKLTGMAFRVPTANVSV



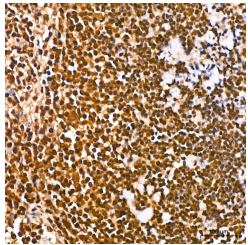
Western blot analysis of various lysates, using GAPDH antibody (STJ11101594) at 1:100000 dilution. Secondary antibody: HRP Goat Anti-rabbit IgG (H+L) (STJS000856) at 1:10000 dilution. Lysates/proteins: 25 Mu g per lane. Blocking buffer: 3% non-fat dry milk in TBST. Detection: ECL Basic Kit. Exposure time: 10s.



Western blot analysis of HeLa cells, using GAPDH rabbit monoclonal antibody (STJ11101594) at 1:10000-1:2560000 dilution. Secondary antibody: HRP Goat Anti-rabbit IgG (H+L) (STJS000856) at 1:10000 dilution. Lysates/proteins: 25 Mu g per lane. Blocking buffer: 3% non-fat dry milk in TBST. Detection: ECL Basic Kit. Exposure time: 10s.



Immunohistochemistry analysis of paraffin-embedded human colon using GAPDH rabbit monoclonal antibody (STJ11101594) at dilution of 1:800 (40x lens). Perform high pressure antigen retrieval with 10 mM citrate buffer pH 6.0 before commencing with immunohistochemistry staining protocol.



Immunohistochemistry analysis of paraffin-embedded human spleen using GAPDH rabbit monoclonal antibody (STJ11101594) at dilution of 1:800 (40x lens). Perform high pressure antigen retrieval with 10 mM citrate buffer pH 6.0 before commencing with immunohistochemistry staining protocol.

This product is suitable for in-vitro studies under the RESEARCH USE ONLY [RUO] licence. This product must not be used as for diagnostic or other medical purposes.
St John's Laboratory Ltd, Knowledge Dock Business Centre, University Way, London, E16 2RD | Tel: 0208 223 3081