

**Anti-Foxa2 antibody (1-100) [S1MR] (STJ11101591)**  
STJ11101591

**GENERAL INFORMATION**

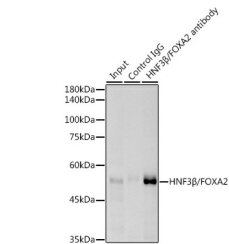
<b>Product Type</b>	Primary antibodies
<b>Short Description</b>	
<b>Applications</b>	WB/IF/ICC/IP/ELISA
<b>Host/Source</b>	Rabbit
<b>Reactivity</b>	Human/Rat

**PRODUCT PROPERTIES**

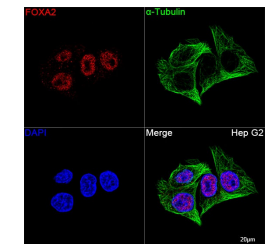
<b>Clonality</b>	Monoclonal
<b>Clone ID</b>	S1MR
<b>Concentration</b>	Lot specific
<b>Conjugation</b>	Unconjugated
<b>Purification</b>	Affinity purification
<b>Dilution Range</b>	WB:1:1000-1:2000 IF/ICC:1:100-1:800 IP:0.5 Mu g-4 Mu g antibody for 200 Mu g-400 Mu g extracts of whole cells ELISA:Recommended starting concentration is 1 Mu g/mL. Please optimize the concentration based on your specific assay requiremen
<b>Formulation</b>	PBS with 0.02% Sodium Azide, 0.05% BSA, 50% Glycerol, pH 7.3.
<b>Isotype</b>	IgG
<b>Storage Instruction</b>	Store at -20°C for up to 1 year from the date of receipt, and avoid repeat freeze-thaw cycles.

**TARGET INFORMATION**

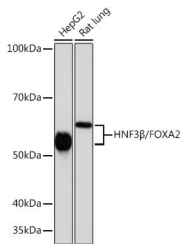
<b>Gene ID</b>	3170
<b>Gene Symbol</b>	FOXA2
<b>Uniprot ID</b>	FOXA2_HUMAN
<b>Immunogen</b>	
<b>Immunogen Region</b>	1-100
<b>Specificity</b>	A synthetic peptide corresponding to a sequence within amino acids 1-100 of human HNF3 Beta/FOXA2 (Q9Y261).
<b>Immunogen Sequence</b>	MLGAVKMEGHEPDSWSSYYA EPEGYSSVSNMAGLGMNGM NTYMSMSAAAMGSGSGNMSA GSMNMSSYVGAGMSPSLAGM SPGAGAMAGMGGSAGAAGVA



Immunoprecipitation analysis of 300 Mu g extracts of HepG2 cells using 3 Mu g HNF3 Beta/FOXA2 antibody (STJ11101591). Western blot was performed from the immunoprecipitate using HNF3 Beta/FOXA2 antibody (STJ11101591) at a dilution of 1:1000.



Confocal imaging of Hep G2 cells using HNF3 Beta/FOXA2 Rabbit monoclonal antibody (STJ11101591, dilution 1:100) followed by a further incubation with Cy3 Goat Anti-Rabbit IgG (H+L) (dilution 1:500) (Red). The cells were counterstained with Alpha-Tubulin Mouse monoclonal antibody (dilution 1:400) followed by incubation with ABFluor 488-conjugated Goat Anti-Mouse IgG (H+L) antibody (dilution 1:500) (Green). DAPI was used for nuclear staining (Blue). Objective: 100x.



Western blot analysis of various lysates using HNF3 Beta/FOXA2 Rabbit monoclonal antibody (STJ11101591) at 1:1000 dilution. Secondary antibody: HRP Goat Anti-Rabbit IgG (H+L) (STJ000666) at 1:10000 dilution. Lysates/proteins: 25 Mu g per lane. Blocking buffer: 3% nonfat dry milk in TBST. Detection: ECL Basic Kit. Exposure time: 3min.

This product is suitable for in-vitro studies under the RESEARCH USE ONLY [RUO] licence. This product must not be used as for diagnostic or other medical purposes.  
St John's Laboratory Ltd, Knowledge Dock Business Centre, University Way, London, E16 2RD | Tel: 0208 223 3081