

Anti-FGFR2 antibody (1-100) [S9MR] (STJ11101589)

STJ11101589

GENERAL INFORMATION

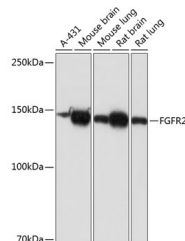
Product Type	Primary antibodies
Short Description	
Applications	WB/ELISA
Host/Source	Rabbit
Reactivity	Human/Mouse/Rat

PRODUCT PROPERTIES

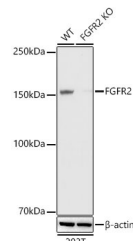
Clonality	Monoclonal
Clone ID	S9MR
Concentration	Lot specific
Conjugation	Unconjugated
Purification	Affinity purification
Dilution Range	WB:1:1000-1:2000 ELISA:Recommended starting concentration is 1 µg/mL. Please optimize the concentration based on your specific assay requirements.
Formulation	PBS with 0.02% Sodium Azide, 0.05% BSA, 50% Glycerol, pH 7.3.
Isotype	IgG
Storage Instruction	Store at -20°C for up to 1 year from the date of receipt, and avoid repeat freeze-thaw cycles.

TARGET INFORMATION

Gene ID	2263
Gene Symbol	FGFR2
Uniprot ID	FGFR2_HUMAN
Immunogen	
Immunogen Region	1-100
Specificity	A synthetic peptide corresponding to a sequence within amino acids 1-100 of human FGFR2 (P21802).
Immunogen Sequence	MVSWGRFICLVVVTMATLSL ARPSFSLVEDTTLEPEEPPT KYQISQPEVYVAAPGESLEV RCLLKDAAVISWTKDGVHLG PNNRTVLIGEYLQIKGATPR



Western blot analysis of extracts of various cell lines, using FGFR2 antibody (STJ11101589) at 1:1000 dilution. Secondary antibody: HRP Goat Anti-rabbit IgG (H+L) (STJS000856) at 1:10000 dilution. Lysates/proteins: 25 µg per lane. Blocking buffer: 3% non-fat dry milk in TBST. Detection: ECL Basic Kit. Exposure time: 3min.



Western blot analysis of extracts from wild type (WT) and FGFR2 knockout (KO) 293T cells, using FGFR2 antibody (STJ11101589) at 1:1000 dilution. Secondary antibody: HRP Goat Anti-rabbit IgG (H+L) (STJS000856) at 1:10000 dilution. Lysates/proteins: 25 µg per lane. Blocking buffer: 3% non-fat dry milk in TBST. Detection: ECL Basic Kit. Exposure time: 1s.

This product is suitable for in-vitro studies under the RESEARCH USE ONLY [RUO] licence. This product must not be used as for diagnostic or other medical purposes.
St John's Laboratory Ltd, Knowledge Dock Business Centre, University Way, London, E16 2RD | Tel: 0208 223 3081