

Anti-EIF4E antibody (118-217) [S2MR] (STJ11101582)

STJ11101582

GENERAL INFORMATION

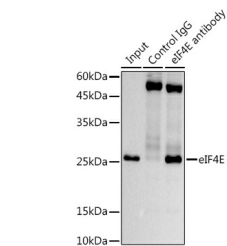
Product Type	Primary antibodies
Short Description	
Applications	WB/IP/ELISA
Host/Source	Rabbit
Reactivity	Mouse/Rat

PRODUCT PROPERTIES

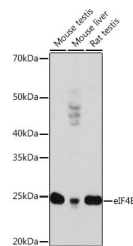
Clonality	Monoclonal
Clone ID	S2MR
Concentration	Lot specific
Conjugation	Unconjugated
Purification	Affinity purification
Dilution Range	WB:1:500-1:1000 IP:0.5 Mu g-4 Mu g antibody for 400 Mu g-600 Mu g extracts of whole cells ELISA:Recommended starting concentration is 1 Mu g/mL. Please optimize the concentration based on your specific assay requirements.
Formulation	PBS with 0.02% Sodium Azide, 0.05% BSA, 50% Glycerol, pH 7.3.
Isotype	IgG
Storage Instruction	Store at -20°C for up to 1 year from the date of receipt, and avoid repeat freeze-thaw cycles.

TARGET INFORMATION

Gene ID	1977
Gene Symbol	EIF4E
Uniprot ID	IF4E_HUMAN
Immunogen	
Immunogen Region	118-217
Specificity	A synthetic peptide corresponding to a sequence within amino acids 118-217 of human eIF4E (P06730).
Immunogen Sequence	NKQRRSDLDLRFWLETLLCL IGESFDDYSDDVCGAVNVNR AKGDKIAIWTTECENREAVT HIGRVYKERLGLPPKIVIGY QSHADTATKSGSTTKNRFVW



Immunoprecipitation analysis of 600 Mu g extracts of Mouse testis using 5 Mu g eIF4E antibody (STJ11101582). Western blot was performed from the immunoprecipitate using eIF4E (STJ11101582) at a dilution of 1:500.



Western blot analysis of various lysates using eIF4E Rabbit monoclonal antibody (STJ11101582) at 1:1000 dilution. Secondary antibody: HRP Goat Anti-Rabbit IgG (H+L) (STJS000856) at 1:10000 dilution. Lysates/proteins: 25 Mu g per lane. Blocking buffer: 3% nonfat dry milk in TBST. Detection: ECL Enhanced Kit. Exposure time: 3min.

This product is suitable for in-vitro studies under the RESEARCH USE ONLY [RUO] licence. This product must not be used as for diagnostic or other medical purposes.
St John's Laboratory Ltd, Knowledge Dock Business Centre, University Way, London, E16 2RD | Tel: 0208 223 3081