

**Anti-TNFRSF10B antibody (341-440) [S1MR] (STJ11101581)**  
STJ11101581

**GENERAL INFORMATION**

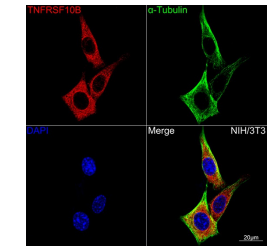
<b>Product Type</b>	Primary antibodies
<b>Short Description</b>	
<b>Applications</b>	WB/IHC-P/IF/ICC/ELISA
<b>Host/Source</b>	Rabbit
<b>Reactivity</b>	Human/Mouse/Rat

**PRODUCT PROPERTIES**

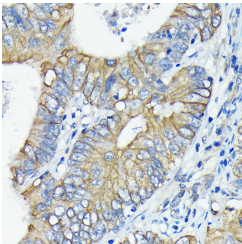
<b>Clonality</b>	Monoclonal
<b>Clone ID</b>	S1MR
<b>Concentration</b>	Lot specific
<b>Conjugation</b>	Unconjugated
<b>Purification</b>	Affinity purification
<b>Dilution Range</b>	WB:1:1000-1:2000 IHC-P:1:200-1:800 IF/ICC:1:100-1:400 ELISA:Recommended starting concentration is 1 Mu g/mL. Please optimize the concentration based on your specific assay requirements.
<b>Formulation</b>	PBS with 0.02% Sodium Azide, 0.05% BSA, 50% Glycerol, pH 7.3.
<b>Isotype</b>	IgG
<b>Storage Instruction</b>	Store at -20°C for up to 1 year from the date of receipt, and avoid repeat freeze-thaw cycles.

**TARGET INFORMATION**

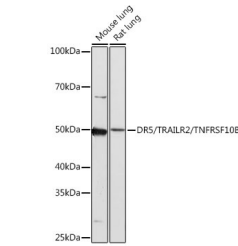
<b>Gene ID</b>	8795
<b>Gene Symbol</b>	TNFRSF10B
<b>Uniprot ID</b>	TR10B_HUMAN
<b>Immunogen</b>	
<b>Immunogen Region</b>	341-440
<b>Specificity</b>	A synthetic peptide corresponding to a sequence within amino acids 341-440 of human DR5/TRAILR2/TNFRSF10B (O14763).
<b>Immunogen Sequence</b>	CFDDFADLVPFDSWEPLMRK LGLMDNEIKVAKAEAAAGHRD TLYTMLIKWVNKTGRDASVH TLLDALETGERLAKQKIED HLLSSGKFMYLEGNADSAMS



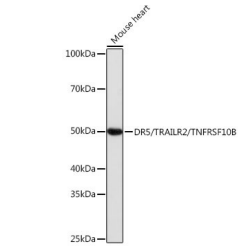
Confocal imaging of NIH-3T3 cells using DR5/TRAILR2/TNFRSF10B Rabbit monoclonal antibody (STJ11101581, dilution 1:100) (Red). The cells were counterstained with Alpha-Tubulin Mouse monoclonal antibody (dilution 1:400) (Green). DAPI was used for nuclear staining (blue). Objective: 100x.



Immunohistochemistry analysis of paraffin-embedded human colon carcinoma using DR5/TRAILR2/TNFRSF10B Rabbit monoclonal antibody (STJ11101581) at dilution of 1:100 (40x lens). Perform microwave antigen retrieval with 10 mM PBS buffer pH 7.2 before commencing with immunohistochemistry staining protocol.



Western blot analysis of extracts of various cell lines, using DR5/TRAILR2/TNFRSF10B antibody (STJ11101581) at 1:1000 dilution. Secondary antibody: HRP Goat Anti-Rabbit IgG (H+L) (STJSD00656) at 1:10000 dilution. Lysates/proteins: 25 Mu g per lane. Blocking buffer: 3% nonfat dry milk in TBST. Detection: ECL Basic Kit. Exposure time: 3min.



Western blot analysis of extracts of Mouse heart, using DR5/TRAILR2/TNFRSF10B antibody (STJ11101581) at 1:1000 dilution. Secondary antibody: HRP Goat Anti-Rabbit IgG (H+L) (STJSD00656) at 1:10000 dilution. Lysates/proteins: 25 Mu g per lane. Blocking buffer: 3% nonfat dry milk in TBST. Detection: ECL Basic Kit. Exposure time: 1s.

This product is suitable for in-vitro studies under the RESEARCH USE ONLY [RUO] licence. This product must not be used as for diagnostic or other medical purposes.  
St John's Laboratory Ltd, Knowledge Dock Business Centre, University Way, London, E16 2RD | Tel: 0208 223 3081