

## Anti-CCND1 antibody (196-295) [S6MR] (STJ11101576)

STJ11101576

### GENERAL INFORMATION

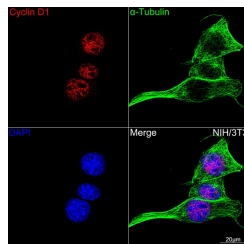
<b>Product Type</b>	Primary antibodies
<b>Short Description</b>	
<b>Applications</b>	WB/IF/ICC/ELISA
<b>Host/Source</b>	Rabbit
<b>Reactivity</b>	Human/Mouse/Rat

### PRODUCT PROPERTIES

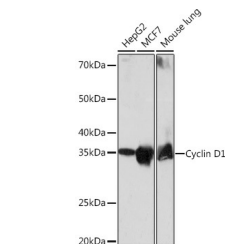
<b>Clonality</b>	Monoclonal
<b>Clone ID</b>	S6MR
<b>Concentration</b>	Lot specific
<b>Conjugation</b>	Unconjugated
<b>Purification</b>	Affinity purification
<b>Dilution Range</b>	WB:1:1000-1:2000 IF/ICC:1:100-1:800 ELISA:Recommended starting concentration is 1 µg/mL. Please optimize the concentration based on your specific assay requirements.
<b>Formulation</b>	PBS with 0.02% Sodium Azide, 0.05% BSA, 50% Glycerol, pH 7.3.
<b>Isotype</b>	IgG
<b>Storage Instruction</b>	Store at -20°C for up to 1 year from the date of receipt, and avoid repeat freeze-thaw cycles.

### TARGET INFORMATION

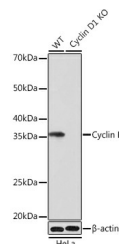
<b>Gene ID</b>	595
<b>Gene Symbol</b>	CCND1
<b>Uniprot ID</b>	CCND1_HUMAN
<b>Immunogen</b>	
<b>Immunogen Region</b>	196-295
<b>Specificity</b>	A synthetic peptide corresponding to a sequence within amino acids 196-295 of human Cyclin D1 (P24385).
<b>Immunogen Sequence</b>	ISNPPSMVAAGSVAAVQGL NLRSPNNFLSYRFLRSLR VIKCDPDCLRACQEQIEALL ESSLRQAQQNMDPKAAEEEE EEEEVDLACTPTDVRDVI



Confocal imaging of NIH/3T3 cells using [KO Validated] Cyclin D1 Rabbit monoclonal antibody (STJ11101576, dilution 1:100) (Red). The cells were counterstained with Alpha-Tubulin Mouse monoclonal antibody (dilution 1:400) (Green). DAPI was used for nuclear staining (blue). Objective: 100x.



Western blot analysis of various lysates using [KO Validated] Cyclin D1 Rabbit monoclonal antibody (STJ11101576) at 1:1000 dilution. Secondary antibody: HRP Goat Anti-Rabbit IgG (H+L) (STJS000856) at 1:10000 dilution. Lysates/proteins: 25 µg per lane. Blocking buffer: 3% nonfat dry milk in TBST. Detection: ECL Basic Kit. Exposure time: 1min.



Western blot analysis of lysates from wild type (WT) and Cyclin D1 knockout (KO) HeLa cells, using [KO Validated] Cyclin D1 Rabbit monoclonal antibody (STJ11101576) at 1:1000 dilution. Secondary antibody: HRP Goat Anti-Rabbit IgG (H+L) (STJS000856) at 1:10000 dilution. Lysates/proteins: 25 µg per lane. Blocking buffer: 3% nonfat dry milk in TBST. Detection: ECL Basic Kit. Exposure time: 1min.

This product is suitable for in-vitro studies under the RESEARCH USE ONLY [RUO] licence. This product must not be used as for diagnostic or other medical purposes.  
St John's Laboratory Ltd, Knowledge Dock Business Centre, University Way, London, E16 2RD | Tel: 0208 223 3081