

Anti-CCNB1 antibody (3-177) [S5MR] (STJ11101575)

STJ11101575

GENERAL INFORMATION

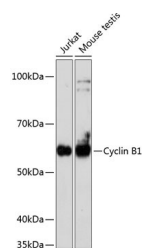
Product Type	Primary antibodies
Short Description	
Applications	WB/ELISA
Host/Source	Rabbit
Reactivity	Human/Mouse

PRODUCT PROPERTIES

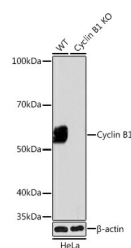
Clonality	Monoclonal
Clone ID	S5MR
Concentration	Lot specific
Conjugation	Unconjugated
Purification	Affinity purification
Dilution	WB:1:2500-1:10000
Range	ELISA:Recommended starting concentration is 1 Mu g/mL. Please optimize the concentration based on your specific assay requirements.
Formulation	PBS with 0.02% Sodium Azide, 0.05% BSA, 50% Glycerol, pH 7.3.
Isotype	IgG
Storage	Store at -20°C for up to 1 year from the date of receipt, and avoid repeat freeze-thaw cycles.
Instruction	

TARGET INFORMATION

Gene ID	891
Gene Symbol	CCNB1
Uniprot ID	CCNB1_HUMAN
Immunogen	
Immunogen Region	3-177
Specificity	Recombinant fusion protein containing a sequence corresponding to amino acids 3-177 of human Cyclin B1 (P14635). LRVTRNSKINAENKAKINMA GAKRVPTAPAATSKPGLRPR TALGDIGNKVSEQLQAKMPM KKEAKPSATGKVIDKKLPKP LEKVPMLVPVPVSEPVEPEPEPEPEPVKEEKLSPEILV DTASPSMETSGCAPAEEDL CQAFSDVILAVNDVDAEDGA DPNLCSEYVKDIYAY
Immunogen Sequence	



Western blot analysis of extracts of various cell lines, using Cyclin B1 antibody (STJ11101575) at 1:1000 dilution. Secondary antibody: HRP Goat Anti-Rabbit IgG (H+L) (STJS000856) at 1:10000 dilution. Lysates/proteins: 25 Mu g per lane. Blocking buffer: 3% nonfat dry milk in TBST. Detection: ECL Basic Kit. Exposure time: 3min.



Western blot analysis of extracts from wild type (WT) and Cyclin B1 knockout (KO) HeLa cells, using Cyclin B1 antibody (STJ11101575) at 1:1000 dilution. Secondary antibody: HRP Goat Anti-Rabbit IgG (H+L) (STJS000856) at 1:10000 dilution. Lysates/proteins: 25 Mu g per lane. Blocking buffer: 3% nonfat dry milk in TBST. Detection: ECL Basic Kit. Exposure time: 3min.

This product is suitable for in-vitro studies under the RESEARCH USE ONLY [RUO] licence. This product must not be used as for diagnostic or other medical purposes.
St John's Laboratory Ltd, Knowledge Dock Business Centre, University Way, London, E16 2RD | Tel: 0208 223 3081