

Anti-MYC antibody (1-100) [S0MR] (STJ11101570)

STJ11101570

GENERAL INFORMATION

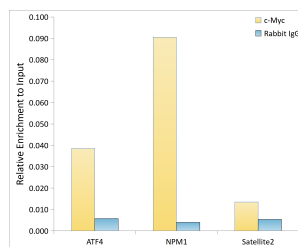
Product Type	Primary antibodies
Short Description	
Applications	WB/ELISA/ChIP/CUT&Tag
Host/Source	Rabbit
Reactivity	Human

PRODUCT PROPERTIES

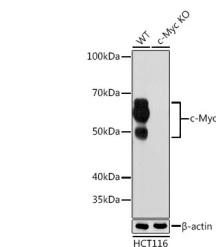
Clonality	Monoclonal
Clone ID	S0MR
Concentration	Lot specific
Conjugation	Unconjugated
Purification	Affinity purification
Dilution Range	WB:1:1000-1:2000 ELISA:Recommended starting concentration is 1 Mu g/mL. Please optimize the concentration based on your specific assay requirements. ChIP:5 Mu g antibody for 10 Mu g-15 Mu g of Chromatin CUT&Tag: 10 ⁵ cells/1 Mu g
Formulation	PBS with 0.02% Sodium Azide, 0.05% BSA, 50% Glycerol, pH 7.3.
Isotype	IgG
Storage Instruction	Store at -20°C for up to 1 year from the date of receipt, and avoid repeat freeze-thaw cycles.

TARGET INFORMATION

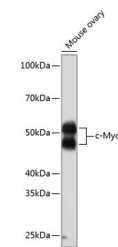
Gene ID	4609
Gene Symbol	MYC
Uniprot ID	MYC_HUMAN
Immunogen	
Immunogen Region	1-100
Specificity	A synthetic peptide corresponding to a sequence within amino acids 1-100 of human c-Myc (P01106).
Immunogen Sequence	MPLNVSFTNRNYDLDDYDSVQ PYFYCDEEENFYQQQQQSEL QPPAPSEDIWKKFELLPTPP LSPSRRLGLCSPSYVAVTPF SLRGDNDGGGGSFSTADQLE



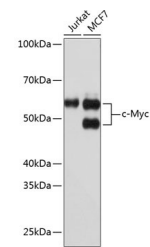
Chromatin immunoprecipitation analysis of extracts of K562 cells, using c-Myc antibody (STJ11101570) and rabbit IgG. The amount of immunoprecipitated DNA was checked by quantitative PCR. Histogram was constructed by the ratios of the immunoprecipitated DNA to the input.



Western blot analysis of lysates from wild type (WT) and c-Myc knockout (KO) HCT 116 cells, using [KO Validated] c-Myc Rabbit monoclonal antibody (STJ11101570) at 1:1000 dilution. Secondary antibody: HRP Goat Anti-Rabbit IgG (H+L) (STJS000856) at 1:10000 dilution. Lysates/proteins: 25 Mu g per lane. Blocking buffer: 3% nonfat dry milk in TBST. Detection: ECL Basic Kit. Exposure time: 10s.



Western blot analysis of lysates from Mouse ovary, using [KO Validated] c-Myc Rabbit monoclonal antibody (STJ11101570) at 1:1000 dilution. Secondary antibody: HRP Goat Anti-Rabbit IgG (H+L) (STJS000856) at 1:10000 dilution. Lysates/proteins: 25 Mu g per lane. Blocking buffer: 3% nonfat dry milk in TBST. Detection: ECL Enhanced Kit. Exposure time: 3min.



Western blot analysis of various lysates using [KO Validated] c-Myc Rabbit monoclonal antibody (STJ11101570) at 1:1000 dilution. Secondary antibody: HRP Goat Anti-Rabbit IgG (H+L) (STJS000856) at 1:10000 dilution. Lysates/proteins: 25 Mu g per lane. Blocking buffer: 3% nonfat dry milk in TBST. Detection: ECL Basic Kit. Exposure time: 10s.

This product is suitable for in-vitro studies under the RESEARCH USE ONLY [RUO] licence. This product must not be used as for diagnostic or other medical purposes.

St John's Laboratory Ltd, Knowledge Dock Business Centre, University Way, London, E16 2RD | Tel: 0208 223 3081