

Anti-CDX2 antibody (1-100) [S8MR] (STJ11101568)

STJ11101568

GENERAL INFORMATION

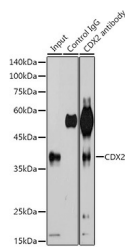
Product Type	Primary antibodies
Short Description	
Applications	WB/IHC-P/IF/ICC/IP/ELISA
Host/Source	Rabbit
Reactivity	Human/Mouse/Rat

PRODUCT PROPERTIES

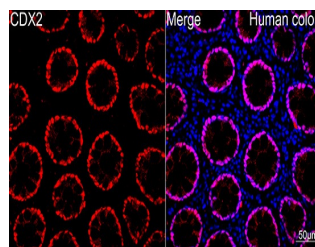
Clonality	Monoclonal
Clone ID	S8MR
Concentration	Lot specific
Conjugation	Unconjugated
Purification	Affinity purification
Dilution Range	WB:1:1000-1:2000 IHC-P:1:500-1:2000 IF/ICC:1:100-1:1000 IP:0.5 Mu g-4 Mu g antibody for 200 Mu g-400 Mu g extracts of whole cells ELISA:Recommended starting concentration is 1 Mu g/mL. Please optimize the concentration based on your s
Formulation	PBS with 0.02% Sodium Azide, 0.05% BSA, 50% Glycerol, pH 7.3.
Isotype	IgG
Storage	Store at -20°C for up to 1 year from the date of receipt, and avoid repeat freeze-thaw cycles.
Instruction	

TARGET INFORMATION

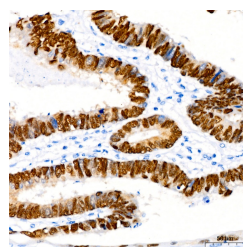
Gene ID	1045
Gene Symbol	CDX2
Uniprot ID	CDX2_HUMAN
Immunogen	
Immunogen	1-100
Region	
Specificity	A synthetic peptide corresponding to a sequence within amino acids 1-100 of human CDX2 (Q99626).
Immunogen	MYVSYLLDKDVSMPSSVRH SGGLNLAPQNFVSPQYPDY GGYHVAIAAAAAAAAAANLDSAQS PGPSWPAAYGAPLREDWNGY
Sequence	APGGAIAAANAHAHGLNGGS



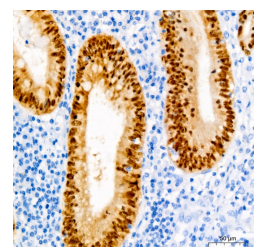
Immunoprecipitation analysis of 600 Mu g extracts of 293T cells using 3 Mu g [KD Validated] CDX2 Rabbit monoclonal antibody (STJ11101568). Western blot was performed from the immunoprecipitate using CDX2 antibody (STJ11101568) at a dilution of 1:500.



Confocal imaging of Human colon using [KD Validated] CDX2 Rabbit monoclonal antibody (STJ11101568, dilution 1:100) (Red), DAPI was used for nuclear staining (blue). Objective: 40x.



Immunohistochemistry analysis of CDX2 in paraffin-embedded human colon carcinoma using [KD Validated] CDX2 Rabbit monoclonal antibody (STJ11101568) at dilution of 1:800 (40x lens). Perform high pressure antigen retrieval with 10 mM Tris/EDTA buffer pH 9.0 before commencing with immunohistochemistry staining protocol.



Immunohistochemistry analysis of CDX2 in paraffin-embedded human appendix using [KD Validated] CDX2 Rabbit monoclonal antibody (STJ11101568) at dilution of 1:800 (40x lens). Perform high pressure antigen retrieval with 10 mM Tris/EDTA buffer pH 9.0 before commencing with immunohistochemistry staining protocol.

This product is suitable for in-vitro studies under the RESEARCH USE ONLY [RUO] licence. This product must not be used as for diagnostic or other medical purposes.
St John's Laboratory Ltd, Knowledge Dock Business Centre, University Way, London, E16 2RD | Tel: 0208 223 3081