

Anti-PECAM1 antibody (630-738) [S2MR] (STJ11101552)
STJ11101552

GENERAL INFORMATION

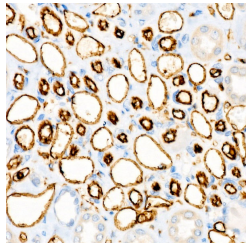
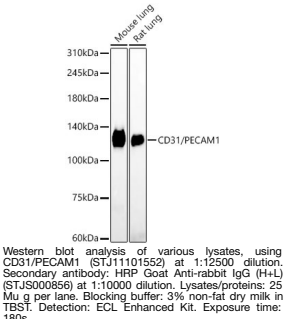
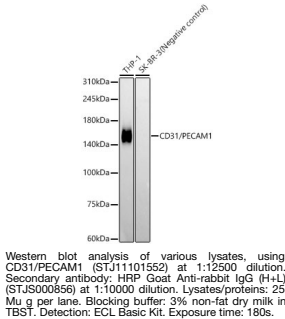
Product Type	Primary antibodies
Short Description	
Applications	WB/IHC-P/IF/ICC/ELISA
Host/Source	Rabbit
Reactivity	Human/Mouse/Rat

PRODUCT PROPERTIES

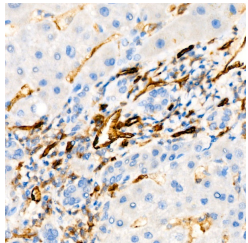
Clonality	Monoclonal
Clone ID	S2MR
Concentration	Lot specific
Conjugation	Unconjugated
Purification	Affinity purification
Dilution Range	WB:1:2000-1:10000 IHC-P:1:500-1:2000 IF/ICC:1:200-1:600 ELISA:Recommended starting concentration is 1 μ g/mL. Please optimize the concentration based on your specific assay requirements.
Formulation	PBS with 0.05% Proclin300, 0.05% BSA, 50% Glycerol, pH 7.3.
Isotype	IgG
Storage	Store at -20°C for up to 1 year from the date of receipt, and avoid repeat freeze-thaw cycles.
Instruction	

TARGET INFORMATION

Gene ID	5175
Gene Symbol	PECAM1
Uniprot ID	PECA1_HUMAN
Immunogen	
Immunogen Region	630-738
Specificity	Recombinant fusion protein containing a sequence corresponding to amino acids 630-738 of CD31/PECAM1 (NP_000433.4).
Immunogen Sequence	AKQMPVEMSRPAVPLLSNN EKMSDPNMEANSHYGHNDV R NHAMKPINDNKEPLNSDVQ YTEVQVSSAESHKDLGKKDT ETVYSEVRKAVPDVAVESRYS RTEGSLDGT



Immunohistochemistry analysis of paraffin-embedded human kidney using CD31/PECAM1 rabbit monoclonal antibody (STJ11101552) at dilution of 1:2000 (40x lens). Perform high pressure antigen retrieval with 10 mM citrate buffer pH 6, 0 before commencing with immunohistochemistry staining protocol.



Immunohistochemistry analysis of paraffin-embedded human liver using CD31/PECAM1 rabbit monoclonal antibody (STJ11101552) at dilution of 1:2000 (40x lens). Perform high pressure antigen retrieval with 10 mM citrate buffer pH 6, 0 before commencing with immunohistochemistry staining protocol.