

## Anti-ITGAM antibody (1053-1152) [S8MR] (STJ11101548)

STJ11101548

### GENERAL INFORMATION

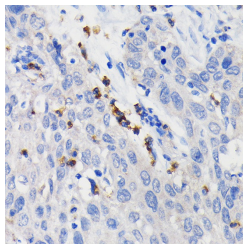
<b>Product Type</b>	Primary antibodies
<b>Short Description</b>	
<b>Applications</b>	WB/IHC-P/FC/ELISA
<b>Host/Source</b>	Rabbit
<b>Reactivity</b>	Human

### PRODUCT PROPERTIES

<b>Clonality</b>	Monoclonal
<b>Clone ID</b>	S8MR
<b>Concentration</b>	Lot specific
<b>Conjugation</b>	Unconjugated
<b>Purification</b>	Affinity purification
<b>Dilution Range</b>	WB:1:500-1:1000 IHC-P:1:50-1:200 FC:1:50-1:200 ELISA:Recommended starting concentration is 1 µg/mL. Please optimize the concentration based on your specific assay requirements.
<b>Formulation</b>	PBS with 0.02% Sodium Azide, 0.05% BSA, 50% Glycerol, pH 7.3.
<b>Isotype</b>	IgG
<b>Storage Instruction</b>	Store at -20°C for up to 1 year from the date of receipt, and avoid repeat freeze-thaw cycles.

### TARGET INFORMATION

<b>Gene ID</b>	3684
<b>Gene Symbol</b>	ITGAM
<b>Uniprot ID</b>	ITAM_HUMAN
<b>Immunogen</b>	
<b>Immunogen Region</b>	1053-1152
<b>Specificity</b>	A synthetic peptide corresponding to a sequence within amino acids 1053-1152 of human CD11b/ITGAM (P11215).
<b>Immunogen Sequence</b>	FDWYIKTSHNHLLIVSTAEI LFNDSVFTLLPGQGAFVRSQ TETKVEPFVEPNPLPLIVGS SVGGLLLLALITAALYKLG FFKRQYKDMMSSEGGPPGAEPQ



Immunohistochemistry analysis of CD11b/ITGAM in paraffin-embedded human lung cancer using CD11b/ITGAM Rabbit monoclonal antibody (STJ11101548) at dilution of 1:100 (40x lens). Perform microwave antigen retrieval with 10 mM PBS buffer pH 7.2 before commencing with immunohistochemistry staining protocol.