

## Anti-ITGAL antibody (1071-1170) [S7MR] (STJ11101547)

STJ11101547

### GENERAL INFORMATION

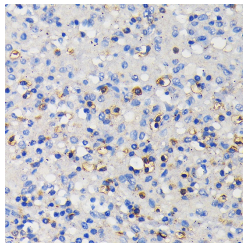
<b>Product Type</b>	Primary antibodies
<b>Short Description</b>	
<b>Applications</b>	WB/IHC-P/ELISA
<b>Host/Source</b>	Rabbit
<b>Reactivity</b>	Human

### PRODUCT PROPERTIES

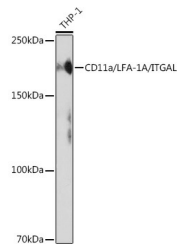
<b>Clonality</b>	Monoclonal
<b>Clone ID</b>	S7MR
<b>Concentration</b>	Lot specific
<b>Conjugation</b>	Unconjugated
<b>Purification</b>	Affinity purification
<b>Dilution Range</b>	WB:1:500-1:2000 IHC-P:1:50-1:200 ELISA:Recommended starting concentration is 1 Mu g/mL. Please optimize the concentration based on your specific assay requirements.
<b>Formulation</b>	PBS with 0.02% Sodium Azide, 0.05% BSA, 50% Glycerol, pH 7.3.
<b>Isotype</b>	IgG
<b>Storage Instruction</b>	Store at -20°C for up to 1 year from the date of receipt, and avoid repeat freeze-thaw cycles.

### TARGET INFORMATION

<b>Gene ID</b>	3683
<b>Gene Symbol</b>	ITGAL
<b>Uniprot ID</b>	ITAL_HUMAN
<b>Immunogen</b>	
<b>Immunogen Region</b>	1071-1170
<b>Specificity</b>	A synthetic peptide corresponding to a sequence within amino acids 1071-1170 of human CD11a/LFA-1A/ITGAL (P20701).
<b>Immunogen Sequence</b>	NASLAQVVMKVDVYEQML YLYLSGIGGLLLLLIFIV LYKVGFFKRNLKEKMEAGRG VPNGIPAEDSEQLASGQEAG DPGCLKPLHEKDSESGGKDK



Immunohistochemistry analysis of paraffin-embedded human spleen using CD11a/LFA-1A/ITGAL Rabbit monoclonal antibody (STJ11101547) at dilution of 1:100 (40x lens). Perform microwave antigen retrieval with 10 mM PBS buffer pH 7.2 before commencing with immunohistochemistry staining protocol.



Western blot analysis of extracts of THP-1 cells, using CD11a/LFA-1A/ITGAL antibody (STJ11101547) at 1:1000 dilution. Secondary antibody: HRP Goat Anti-Rabbit IgG (H+L) (STJS000856) at 1:10000 dilution. Lysates/proteins: 25 Mu g per lane. Blocking buffer: 3% nonfat dry milk in TBST. Detection: ECL Enhanced Kit. Exposure time: 3min.

This product is suitable for in-vitro studies under the RESEARCH USE ONLY [RUO] licence. This product must not be used as for diagnostic or other medical purposes.  
St John's Laboratory Ltd, Knowledge Dock Business Centre, University Way, London, E16 2RD | Tel: 0208 223 3081