

**Anti-ENG antibody (1-200) [S6MR] (STJ11101546)**  
STJ11101546

**GENERAL INFORMATION**

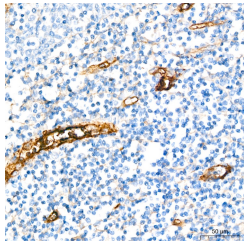
<b>Product Type</b>	Primary antibodies
<b>Short Description</b>	
<b>Applications</b>	WB/IHC-P/ELISA
<b>Host/Source</b>	Rabbit
<b>Reactivity</b>	Human

**PRODUCT PROPERTIES**

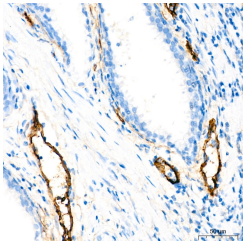
<b>Clonality</b>	Monoclonal
<b>Clone ID</b>	S6MR
<b>Concentration</b>	Lot specific
<b>Conjugation</b>	Unconjugated
<b>Purification</b>	Affinity purification
<b>Dilution</b>	WB:1:1000-1:2000
<b>Range</b>	IHC-P:1:5000-1:20000 ELISA:Recommended starting concentration is 1 $\mu$ g/mL. Please optimize the concentration based on your specific assay requirements.
<b>Formulation</b>	PBS with 0.02% Sodium Azide, 0.05% BSA, 50% Glycerol, pH 7.3.
<b>Isotype</b>	IgG
<b>Storage Instruction</b>	Store at -20°C for up to 1 year from the date of receipt, and avoid repeat freeze-thaw cycles.

**TARGET INFORMATION**

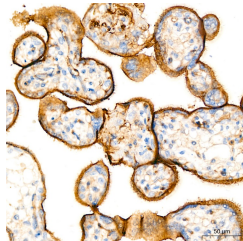
<b>Gene ID</b>	2022
<b>Gene Symbol</b>	ENG
<b>Uniprot ID</b>	EGLN_HUMAN
<b>Immunogen</b>	
<b>Immunogen Region</b>	1-200
<b>Specificity</b>	Recombinant fusion protein containing a sequence corresponding to amino acids 1-200 of human CD105/Endoglin (P17813).
<b>Immunogen Sequence</b>	MDRGTLPLAVALLLASCSLS PTSLAETVHCDLQPVGPERG EVTYTTSQVSKGCVAQAPNA ILEVHVLFEFPTGPSQLEL TLQASKQNGTWPREVLLVLS VNSSVFLHLQALGIPLHLAY NSSLVTFQEPPGVNTTELPS FPKTQILEWAAERGPIISAA ELNDPQSILLRLGQAQGSLS FCMLEASQDMGRITLEWRPT



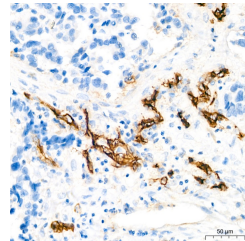
Immunohistochemistry analysis of paraffin-embedded Human tonsil tissue using CD105/Endoglin Rabbit monoclonal antibody (STJ11101546) at a dilution of 1:10000 (40x lens). High pressure antigen retrieval performed with 0.01M Tris-EDTA Buffer (pH 9.0) prior to immunohistochemistry staining.



Immunohistochemistry analysis of paraffin-embedded Human prostate tissue using CD105/Endoglin Rabbit monoclonal antibody (STJ11101546) at a dilution of 1:10000 (40x lens). High pressure antigen retrieval performed with 0.01M Tris-EDTA Buffer (pH 9.0) prior to immunohistochemistry staining.



Immunohistochemistry analysis of paraffin-embedded Human placenta tissue using CD105/Endoglin Rabbit monoclonal antibody (STJ11101546) at a dilution of 1:10000 (40x lens). High pressure antigen retrieval performed with 0.01M Tris-EDTA Buffer (pH 9.0) prior to immunohistochemistry staining.



Immunohistochemistry analysis of paraffin-embedded Human breast cancer tissue using CD105/Endoglin Rabbit monoclonal antibody (STJ11101546) at a dilution of 1:10000 (40x lens). High pressure antigen retrieval performed with 0.01M Tris-EDTA Buffer (pH 9.0) prior to immunohistochemistry staining.

This product is suitable for in-vitro studies under the RESEARCH USE ONLY [RUO] licence. This product must not be used as for diagnostic or other medical purposes.  
St John's Laboratory Ltd, Knowledge Dock Business Centre, University Way, London, E16 2RD | Tel: 0208 223 3081