

Anti-CTSB antibody (27-156) [S3MR] (STJ11101543)

STJ11101543

GENERAL INFORMATION

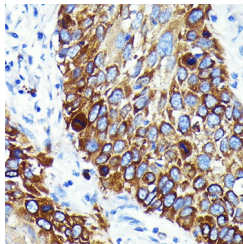
Product Type	Primary antibodies
Short Description	
Applications	WB/IHC-P/ELISA
Host/Source	Rabbit
Reactivity	Human

PRODUCT PROPERTIES

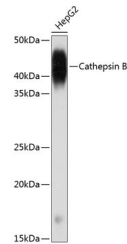
Clonality	Monoclonal
Clone ID	S3MR
Concentration	Lot specific
Conjugation	Unconjugated
Purification	Affinity purification
Dilution Range	WB:1:1000-1:2000 IHC-P:1:200-1:800 ELISA:Recommended starting concentration is 1 Mu g/mL. Please optimize the concentration based on your specific assay requirements.
Formulation	PBS with 0.02% Sodium Azide, 0.05% BSA, 50% Glycerol, pH 7.3.
Isotype	IgG
Storage Instruction	Store at -20°C for up to 1 year from the date of receipt, and avoid repeat freeze-thaw cycles.

TARGET INFORMATION

Gene ID	1508
Gene Symbol	CTSB
Uniprot ID	CATB_HUMAN
Immunogen	
Immunogen Region	27-156
Specificity	Recombinant fusion protein containing a sequence corresponding to amino acids 27-156 of human Cathepsin B (P07858).
Immunogen Sequence	SDELVNYVVKRNTTWQAGHN FYNVDMSYLKRLOGTFLGGP KPPQRMFTEDLKLPA SFDA REQWPQCPTIKEIRDQGS CG SCWAFGAVEAISDRICHTN AHVSVEVSAEDLLTCCGSMC GDGCNGGYPA



Immunohistochemistry analysis of paraffin-embedded human lung cancer using Cathepsin B Rabbit monoclonal antibody (STJ11101543) at dilution of 1:100 (40x lens). Perform microwave antigen retrieval with 10 mM PBS buffer pH 7.2 before commencing with immunohistochemistry staining protocol.



Western blot analysis of extracts of HepG2 cells, using Cathepsin B antibody (STJ11101543) at 1:1000 dilution. Secondary antibody: HRP Goat Anti-Rabbit IgG (H+L) (STJS000856) at 1:10000 dilution. Lysates/proteins: 25 Mu g per lane. Blocking buffer: 3% nonfat dry milk in TBST. Detection: ECL Basic Kit. Exposure time: 1min.

This product is suitable for in-vitro studies under the RESEARCH USE ONLY [RUO] licence. This product must not be used as for diagnostic or other medical purposes.
St John's Laboratory Ltd, Knowledge Dock Business Centre, University Way, London, E16 2RD | Tel: 0208 223 3081