

## Anti-CTNNA1 antibody (1-100) [S2MR] (STJ11101542)

STJ11101542

### GENERAL INFORMATION

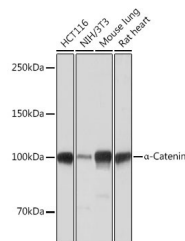
|                          |                    |
|--------------------------|--------------------|
| <b>Product Type</b>      | Primary antibodies |
| <b>Short Description</b> |                    |
| <b>Applications</b>      | WB/ELISA           |
| <b>Host/Source</b>       | Rabbit             |
| <b>Reactivity</b>        | Human/Mouse/Rat    |

### PRODUCT PROPERTIES

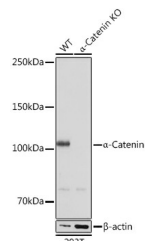
|                            |  |
|----------------------------|--|
| <b>Clonality</b>           | Monoclonal   |
| <b>Clone ID</b>            | S2MR   |
| <b>Concentration</b>       | Lot specific   |
| <b>Conjugation</b>         | Unconjugated   |
| <b>Purification</b>        | Affinity purification  |
| <b>Dilution Range</b>      | WB:1:500-1:1000<br>ELISA:Recommended starting concentration is 1 Mu g/mL. Please optimize the concentration based on your specific assay requirements. |
| <b>Formulation</b>         | PBS with 0.02% Sodium Azide, 0.05% BSA, 50% Glycerol, pH 7.3.  |
| <b>Isotype</b>             | IgG  |
| <b>Storage Instruction</b> | Store at -20°C for up to 1 year from the date of receipt, and avoid repeat freeze-thaw cycles.   |

### TARGET INFORMATION

|                    |   |
|--------------------|---|
| <b>Gene ID</b>     | 1495  |
| <b>Gene Symbol</b> | CTNNA1  |
| <b>Uniprot ID</b>  | CTNA1_HUMAN   |
| <b>Immunogen</b>   |   |
| <b>Immunogen</b>   | 1-100   |
| <b>Region</b>      |   |
| <b>Specificity</b> | A synthetic peptide corresponding to a sequence within amino acids 1-100 of human Alpha-Catenin (P35221). |
| <b>Immunogen</b>   | MTAVHAGNINFKWDPKSLEI RTLAVERLLEPLVTQTTLV NTNSKGPSNKKRGRSKKAHV LAASVEQATENFLEKGD KIA                       |
| <b>Sequence</b>    | KESQFLKEELVAAVEDVRKQ  |



Western blot analysis of extracts of various cell lines, using Alpha-Catenin antibody (STJ11101542) at 1:1000 dilution. Secondary antibody: HRP Goat Anti-Rabbit IgG (H+L) (STJS000856) at 1:10000 dilution. Lysates/proteins: 25 Mu g per lane. Blocking buffer: 3% nonfat dry milk in TBST. Detection: ECL Basic Kit. Exposure time: 1s.



Western blot analysis of extracts from wild type (WT) and Alpha-Catenin knockout (KO) 293T cells, using Alpha-Catenin antibody (STJ11101542) at 1:1000 dilution. Secondary antibody: HRP Goat Anti-Rabbit IgG (H+L) (STJS000856) at 1:10000 dilution. Lysates/proteins: 25 Mu g per lane. Blocking buffer: 3% nonfat dry milk in TBST. Detection: ECL Basic Kit. Exposure time: 1s.

This product is suitable for in-vitro studies under the RESEARCH USE ONLY [RUO] licence. This product must not be used as for diagnostic or other medical purposes.  
St John's Laboratory Ltd, Knowledge Dock Business Centre, University Way, London, E16 2RD | Tel: 0208 223 3081