

Anti-PRKAA1 antibody (421-520 aa) (STJ11101538)

STJ11101538

GENERAL INFORMATION

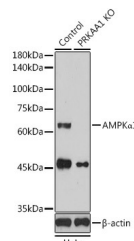
Product Type	Primary antibodies
Short Description	
Applications	WB/ELISA
Host/Source	Rabbit
Reactivity	Human/Mouse

PRODUCT PROPERTIES

Clonality	Polyclonal
Clone ID	
Concentration	Lot specific
Conjugation	Unconjugated
Purification	Affinity purification
Dilution Range	WB:1:500-1:2000 ELISA:Recommended starting concentration is 1 Mu g/mL. Please optimize the concentration based on your specific assay requirements.
Formulation	PBS with 0.01% Thimerosal, 50% Glycerol, pH 7.3.
Isotype	IgG
Storage	Store at -20°C for up to 1 year from the date of receipt, and avoid repeat freeze-thaw cycles.
Instruction	

TARGET INFORMATION

Gene ID	5562
Gene Symbol	PRKAA1
Uniprot ID	AAPK1_HUMAN
Immunogen	
Immunogen	421-520 aa
Region	
Specificity	A synthetic peptide corresponding to a sequence within amino acids 421-520 of human PRKAA1. (NP_006242.5).
Immunogen	MAEVCRAIKQLDYEWKVVNP YYLRVRRKNPVTSTYSKMSL QLYQVDSRTYLLDFRSIDDE ITEAKSGTATPQRSGSVSNY
Sequence	RSCQRSDSDAEAQGKSSEVS



Western blot analysis of extracts from normal (control) and AMPK Alpha 1 knockout (KO) HeLa cells, using AMPK Alpha 1 antibody (STJ11101538) at 1:1000 dilution. Secondary antibody: HRP Goat Anti-rabbit IgG (H+L) at 1:10000 dilution. Lysates/proteins: 25ug per lane. Blocking buffer: 3% nonfat dry milk in TBST. Detection: ECL Enhanced Kit. Exposure time: 3min.

This product is suitable for in-vitro studies under the RESEARCH USE ONLY [RUO] licence. This product must not be used as for diagnostic or other medical purposes.
St John's Laboratory Ltd, Knowledge Dock Business Centre, University Way, London, E16 2RD | Tel: 0208 223 3081