

**Anti-FAM160B2 antibody (74-303) (STJ11101526)**  
STJ11101526

**GENERAL INFORMATION**

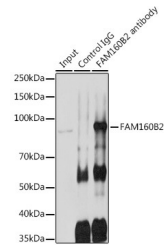
<b>Product Type</b>	Primary antibodies
<b>Short Description</b>	
<b>Applications</b>	WB/IHC-P/IF/ICC/IP/ELISA
<b>Host/Source</b>	Rabbit
<b>Reactivity</b>	Human/Mouse/Rat

**PRODUCT PROPERTIES**

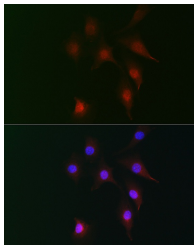
<b>Clonality</b>	Polyclonal
<b>Clone ID</b>	
<b>Concentration</b>	Lot specific
<b>Conjugation</b>	Unconjugated
<b>Purification</b>	Affinity purification
<b>Dilution</b>	WB:1:500-1:1000
<b>Range</b>	IHC-P:1:50-1:200 IF/ICC:1:50-1:200 IP:0.5 Mu g-4 Mu g antibody for 400 Mu g-600 Mu g extracts of whole cells ELISA:Recommended starting concentration is 1 Mu g/mL. Please optimize the concentration based on your specif
<b>Formulation</b>	PBS with 0.05% Proclin300, 50% Glycerol, pH 7.3.
<b>Isotype</b>	IgG
<b>Storage</b>	Store at-20°C for up to 1 year from the date of receipt, and avoid repeat freeze-thaw cycles.
<b>Instruction</b>	

**TARGET INFORMATION**

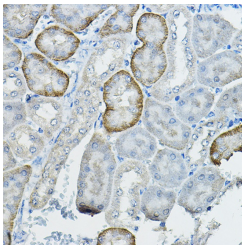
<b>Gene ID</b>	239170
<b>Gene Symbol</b>	Fhip2b
<b>Uniprot ID</b>	FHI2B_MOUSE
<b>Immunogen</b>	
<b>Region</b>	74-303
<b>Specificity</b>	Recombinant fusion protein containing a sequence corresponding to amino acids 74-303 of mouse FAM160B2 (NP_919326.1).
<b>Immunogen Sequence</b>	GEAGPCLEYLLQHKILETLC TLGKAEYPPGMRQQVFQFFS KVLQVQHPLLYLSVHRPV QKLLRLGGTVPGSLTEKEEV QFTSVLCSKIQQDPELLAYI LEGKKIIGKKKTARESTAPP KDIAGYRDKDCPHSDALNRD PGLDKEHCGVPALSIHLPAE TEGPENGPGESNLITSLGL CKSKKSRLALKAQENILLV SVASPAATYLTQSTSCCMA IAEHLCLQLYR



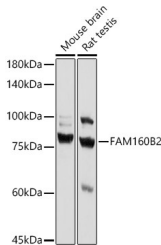
Immunoprecipitation analysis of 600 Mu g extracts of Rat testis cells using 3 Mu g FAM160B2 antibody (STJ11101526). Western blot was performed from the immunoprecipitate using FAM160B2 antibody (STJ11101526) at a dilution of 1:1000.



Immunofluorescence analysis of NIH-3T3 cells using FAM160B2 Rabbit polyclonal antibody (STJ11101526) at dilution of 1:100 (40x lens). Secondary antibody: Cy3 Goat Anti-Rabbit IgG (H+L) at 1:500 dilution. Blue: DAPI for nuclear staining.



Immunohistochemistry analysis of FAM160B2 in paraffin-embedded mouse kidney using FAM160B2 Rabbit polyclonal antibody (STJ11101526) at dilution of 1:100 (40x lens). Perform high pressure antigen retrieval with 10 mM citrate buffer pH 6.0 before commencing with immunohistochemistry staining protocol.



Western blot analysis of various lysates using FAM160B2 Rabbit polyclonal antibody (STJ11101526) at 1:1000 dilution. Secondary antibody: HRP Goat Anti-Rabbit IgG (H+L) (STJS000858) at 1:10000 dilution. Lysates/proteins: 25 Mu g per lane. Blocking buffer: 3% nonfat dry milk in TBST. Detection: ECL Basic Kit. Exposure time: 30s.

This product is suitable for in-vitro studies under the RESEARCH USE ONLY [RUO] licence. This product must not be used as for diagnostic or other medical purposes.  
St John's Laboratory Ltd, Knowledge Dock Business Centre, University Way, London, E16 2RD | Tel: 0208 223 3081