

Anti-PKM2-specific antibody (380-480) (STJ11101493)
STJ11101493

GENERAL INFORMATION

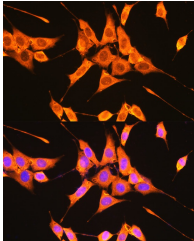
Product Type	Primary antibodies
Short Description	
Applications	WB/IF/CC/ELISA
Host/Source	Rabbit
Reactivity	Human/Mouse/Rat

PRODUCT PROPERTIES

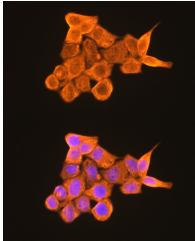
Clonality	Polyclonal
Clone ID	
Concentration	Lot specific
Conjugation	Unconjugated
Purification	Affinity purification
Dilution Range	WB:1:500-1:1000 IF/CC:1:50-1:200 ELISA:Recommended starting concentration is 1 Mu g/mL. Please optimize the concentration based on your specific assay requirements.
Formulation	PBS with 0.01% Thimerosal, 50% Glycerol, pH 7.3.
Isotype	IgG
Storage Instruction	Store at-20°C for up to 1 year from the date of receipt, and avoid repeat freeze-thaw cycles.

TARGET INFORMATION

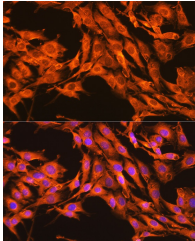
Gene ID	5315
Gene Symbol	PKM
Uniprot ID	KPYM_HUMAN
Immunogen	
Immunogen Region	380-480
Specificity	A synthetic peptide corresponding to a sequence within amino acids 380-480 of human PKM2-specific (NP_002645.3). LIAREAEEAIIYHLQLFEELR RLAPITSDPTEATAVGAVEA SFKCCSGAIIVLTKSGRSAH QVARYRPRAPIIAVTRNPQT
Immunogen Sequence	ARQAHLYRGIFPVLCKDPVQ E



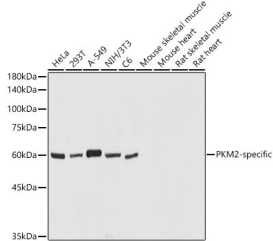
Immunofluorescence analysis of NIH-3T3 cells using PKM2-specific Rabbit polyclonal antibody (STJ11101493) at dilution of 1:100 (40x lens). Secondary antibody: Cy3 Goat Anti-Rabbit IgG (H+L) at 1:500 dilution. Blue: DAPI for nuclear staining.



Immunofluorescence analysis of HeLa cells using PKM2-specific Rabbit polyclonal antibody (STJ11101493) at dilution of 1:100 (40x lens). Secondary antibody: Cy3 Goat Anti-Rabbit IgG (H+L) at 1:500 dilution. Blue: DAPI for nuclear staining.



Immunofluorescence analysis of C6 cells using PKM2-specific Rabbit polyclonal antibody (STJ11101493) at dilution of 1:100 (40x lens). Secondary antibody: Cy3 Goat Anti-Rabbit IgG (H+L) at 1:500 dilution. Blue: DAPI for nuclear staining.



Western blot analysis of various lysates using PKM2-specific Rabbit polyclonal antibody (STJ11101493) at 1:1000 dilution. Secondary antibody: HRP Goat Anti-Rabbit IgG (H+L) (STJ5000856) at 1:10000 dilution. Lysates/proteins: 25 Mu g per lane. Blocking buffer: 3% nonfat dry milk in TBST. Detection: ECL Basic Kit. Exposure time: 1s.

This product is suitable for in-vitro studies under the RESEARCH USE ONLY [RUO] licence. This product must not be used as for diagnostic or other medical purposes.
St John's Laboratory Ltd, Knowledge Dock Business Centre, University Way, London, E16 2RD | Tel: 0208 223 3081