

Anti-APC antibody (1-100) [S6MR] (STJ11101456)

STJ11101456

GENERAL INFORMATION

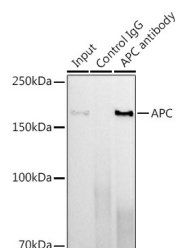
| | |
|--------------------------|--------------------|
| Product Type | Primary antibodies |
| Short Description | |
| Applications | WB/IP/ELISA |
| Host/Source | Rabbit |
| Reactivity | Human/Mouse/Rat |

PRODUCT PROPERTIES

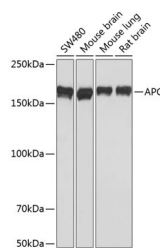
| | |
|----------------------------|--|
| Clonality | Monoclonal |
| Clone ID | S6MR |
| Concentration | Lot specific |
| Conjugation | Unconjugated |
| Purification | Affinity purification |
| Dilution Range | WB:1:1000-1:2000 IP:0.5 Mu g-4 Mu g antibody for 400 Mu g-600 Mu g extracts of whole cells ELISA:Recommended starting concentration is 1 Mu g/mL. Please optimize the concentration based on your specific assay requirements. |
| Formulation | PBS with 0.02% Sodium Azide, 0.05% BSA, 50% Glycerol, pH 7.3. |
| Isotype | IgG |
| Storage Instruction | Store at -20°C for up to 1 year from the date of receipt, and avoid repeat freeze-thaw cycles. |

TARGET INFORMATION

| | |
|---------------------------|--|
| Gene ID | 324 |
| Gene Symbol | APC |
| Uniprot ID | APC_HUMAN |
| Immunogen | |
| Immunogen Region | 1-100 |
| Specificity | A synthetic peptide corresponding to a sequence within amino acids 1-100 of human APC (NP_000029.2). |
| Immunogen Sequence | MAAASYDQLLKQVEALKMEN SNLRQELEDNSNHLTKLETE ASNMKVLKQLQGSIEDEAM ASSGQIDLLERLKLNLDS NFPGVKLRKMSLRSGSRE |



Immunoprecipitation analysis of 600 Mu g extracts of Mouse lung using 3 Mu g APC antibody (STJ11101456). Western blot was performed from the immunoprecipitate using APC antibody (STJ11101456) at a dilution of 1:500.



Western blot analysis of various lysates using APC Rabbit monoclonal antibody (STJ11101456) at 1:1000 dilution. Secondary antibody: HRP Goat Anti-Rabbit IgG (H+L) (STJS000856) at 1:10000 dilution. Lysates/proteins: 25 Mu g per lane. Blocking buffer: 3% nonfat dry milk in TBST. Detection: ECL Basic Kit. Exposure time: 3min.

This product is suitable for in-vitro studies under the RESEARCH USE ONLY [RUO] licence. This product must not be used as for diagnostic or other medical purposes.
St John's Laboratory Ltd, Knowledge Dock Business Centre, University Way, London, E16 2RD | Tel: 0208 223 3081