

Anti-APP antibody (671-770) [S5MR] (STJ11101455)

STJ11101455

GENERAL INFORMATION

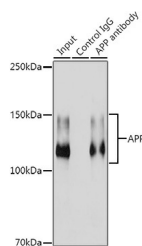
Product Type	Primary antibodies
Short Description	
Applications	WB/IF/ICC/IP/ELISA
Host/Source	Rabbit
Reactivity	Human/Mouse/Rat

PRODUCT PROPERTIES

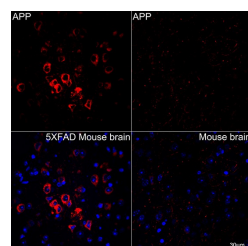
Clonality	Monoclonal
Clone ID	S5MR
Concentration	Lot specific
Conjugation	Unconjugated
Purification	Affinity purification
Dilution Range	WB:1:1000-1:6000 IF/ICC:1:100-1:800 IP:0.5 Mu g-4 Mu g antibody for 200 Mu g-400 Mu g extracts of whole cells ELISA:Recommended starting concentration is 1 Mu g/mL. Please optimize the concentration based on your specific assay requiremen
Formulation	PBS with 0.02% Sodium Azide, 0.05% BSA, 50% Glycerol, pH 7.3.
Isotype	IgG
Storage Instruction	Store at -20°C for up to 1 year from the date of receipt, and avoid repeat freeze-thaw cycles.

TARGET INFORMATION

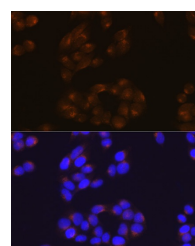
Gene ID	351
Gene Symbol	APP
Uniprot ID	A4_HUMAN
Immunogen	
Immunogen Region	671-770
Specificity	A synthetic peptide corresponding to a sequence within amino acids 671-770 of human APP (P05067).
Immunogen Sequence	MDAEFRHDSGYEVHHQKLVF FAEDVGSNKGAIIGLMVGGV VIATVIVITLVMLKKKQYTS IHHGVWEVDAAVTPEERHLS KMQQNGYENPTYKFFEQMQN



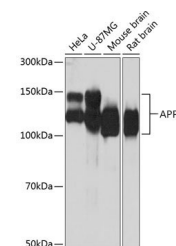
Immunoprecipitation analysis of 300 Mu g extracts from HeLa cells using 3 Mu g [KO Validated] APP Rabbit monoclonal antibody (STJ11101455). Western blot was performed from the immunoprecipitate using [KO Validated] APP Rabbit monoclonal antibody (STJ11101455) at a dilution of 1:1000.



Confocal imaging of paraffin-embedded 5XFAD Mouse brain and Mouse brain using [KO Validated] APP Rabbit monoclonal antibody (STJ11101455, dilution 1:200) followed by a further incubation with Cy3 Goat Anti-Rabbit IgG (H+L) (dilution 1:500) (Red). DAPI was used for nuclear staining (Blue). Objective: 40x.



Immunofluorescence analysis of HeLa cells using APP Rabbit monoclonal antibody (STJ11101455) at dilution of 1:100 (40x lens). Secondary antibody: Cy3 Goat Anti-Rabbit IgG (H+L) at 1:500 dilution. Blue: DAPI for nuclear staining.



Western blot analysis of various lysates using [KO Validated] APP Rabbit monoclonal antibody (STJ11101455) at 1:1000 dilution. Secondary antibody: HRP Goat Anti-Rabbit IgG (H+L) (STJS000856) at 1:10000 dilution. Lysates/proteins: 25 Mu g per lane. Blocking buffer: 3% nonfat dry milk in TBST. Detection: ECL Basic Kit. Exposure time: 10s.

This product is suitable for in-vitro studies under the RESEARCH USE ONLY [RUO] licence. This product must not be used as for diagnostic or other medical purposes.
St John's Laboratory Ltd, Knowledge Dock Business Centre, University Way, London, E16 2RD | Tel: 0208 223 3081