

Anti-GAD1 antibody (1-100) [S4MR] (STJ11101434)

STJ11101434

GENERAL INFORMATION

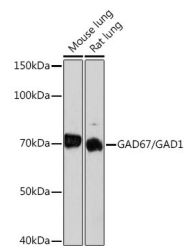
| | |
|--------------------------|--------------------|
| Product Type | Primary antibodies |
| Short Description | S4MR |
| Applications | WB/ELISA |
| Host/Source | Rabbit |
| Reactivity | Human/Mouse/Rat |

PRODUCT PROPERTIES

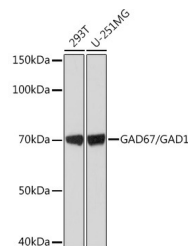
| | |
|-----------------------|---|
| Clonality | Monoclonal |
| Clone ID | S4MR |
| Concentration | Lot specific |
| Conjugation | Unconjugated |
| Purification | Affinity purification |
| Dilution Range | WB:1:1000-1:2000 ELISA:Recommended starting concentration is 1 Mu g/mL. Please optimize the concentration based on your specific assay requirements. |
| Formulation | PBS with 0.02% Sodium Azide, 0.05% BSA, 50% Glycerol, pH 7.3. |
| Isotype | IgG |
| Storage | Store at -20°C for up to 1 year from the date of receipt, and avoid repeat freeze-thaw cycles. |
| Instruction | |

TARGET INFORMATION

| | |
|--------------------|--|
| Gene ID | 2571 |
| Gene Symbol | GAD1 |
| Uniprot ID | DCE1_HUMAN |
| Immunogen | |
| Immunogen | 1-100 |
| Region | |
| Specificity | A synthetic peptide corresponding to a sequence within amino acids 1-100 of human GAD67/GAD1 (Q99259). |
| Immunogen | MASSTPSSSATSSNAGADPN TTNLRPTTYDTWCGVAHGCT RKLGLKICGFLQRTNSLEEK SRLVSAFKERQSSKNLLSCE |
| Sequence | NSDRDARFRRTETDFSNLFA |



Western blot analysis of extracts of various cell lines, using GAD67/GAD1 Rabbit monoclonal antibody (STJ11101434) at 1:1000 dilution. Secondary antibody: HRP Goat Anti-Rabbit IgG (H+L) (STJS000856) at 1:10000 dilution. Lysates/proteins: 25 Mu g per lane. Blocking buffer: 3% nonfat dry milk in TBST. Detection: ECL Basic Kit. Exposure time: 3min.



Western blot analysis of extracts of various cell lines, using GAD67/GAD1 Rabbit monoclonal antibody (STJ11101434) at 1:1000 dilution. Secondary antibody: HRP Goat Anti-Rabbit IgG (H+L) (STJS000856) at 1:10000 dilution. Lysates/proteins: 25 Mu g per lane. Blocking buffer: 3% nonfat dry milk in TBST. Detection: ECL Basic Kit. Exposure time: 1s.

This product is suitable for in-vitro studies under the RESEARCH USE ONLY [RUO] licence. This product must not be used as for diagnostic or other medical purposes.
St John's Laboratory Ltd, Knowledge Dock Business Centre, University Way, London, E16 2RD | Tel: 0208 223 3081